

Shabbat Services:

Friday, September 6

Shabbat B'yachad.....	6:00 PM
Shabbat of Welcome.....	7:00 PM
Shabbat Hallelu.....	7:45 PM

Saturday, September 7 *Shof'tim*

Saturday Morning Minyan.....	9:30 AM
------------------------------	---------

Friday, September 13

Erev Shabbat Service.....	7:45 PM
---------------------------	---------

Saturday, September 14 *Ki Teitzei*

Simchat Shabbat.....	9:00 AM
Saturday Morning Minyan.....	9:30 AM

Friday, September 20

Zimrat Shabbat.....	7:45 PM
---------------------	---------

Saturday, September 21 *Ki Tavo*

Saturday Morning Minyan.....	9:30 AM
------------------------------	---------

Friday, September 27

Pre-Oneg.....	5:00 PM
Erev Shabbat Service.....	6:00 PM

Saturday, September 28 *Nitzavim*

Simchat Shabbat.....	9:00 AM
Saturday Morning Minyan.....	9:30 AM

Friday, October 4

Shabbat Hallelu.....	7:45 PM
----------------------	---------

Saturday, October 5 *Vayeilech*

Saturday Morning Minyan.....	9:30 AM
------------------------------	---------

Friday, October 11

Erev Shabbat Service.....	7:45 PM
---------------------------	---------

Saturday, October 12 *Haazinu*

Simchat Shabbat.....	9:00 AM
Saturday Morning Minyan.....	9:30 AM

Friday, October 18

Shabbat B'yachad.....	6:00 PM
Zimrat Shabbat.....	7:45 PM

Saturday, October 19 *Chol HaMo-eid Sukkot*

Tiny Tot Shabbat.....	9:30 AM
Saturday Morning Minyan.....	9:30 AM

Friday, October 25

Pre-Oneg.....	5:00 PM
Erev Shabbat Service.....	6:00 PM

Saturday, October 26 *B'reishit*

Simchat Shabbat.....	9:00 AM
Saturday Morning Minyan.....	9:30 AM

Minyan Services

Monday-Thursdays.....	7:00 PM
Upon request. Call Laurie Zinberg: 908-232-6770 x 117	

For our High Holyday schedule, please see page 6.

Divrei Halev - Words from the Heart

liturgy represents a communal response to and participation in the sacred!

When Jews gather for worship on Shabbat and Holy Days, we participate in the sacred through the use of liturgy. We transform the common of the day in to the sacred, into giving meaning to life. A wedding is celebrated with liturgy, a baby naming, too. Funerals have liturgy as well. Saying Kaddish is "doing liturgy." Lighting candles with blessings is also liturgy, and blessing our children is a form of liturgy as well.

And I love liturgy, for it often gives expression to feelings that I otherwise might not be able to articulate. And I am always grateful to the liturgist whose words become mine, become ours, because such words give meaning to what we do and how we feel.

In Mishkan Tefillah, our Reform Movement's beautiful Shabbat prayerbook, the liturgist has written the following:

This is an hour of change.
Within it we stand uncertain on the border of light.
Shall we draw back or cross over?
Where shall our hearts turn?
Shall we draw back my brother, my sister,
Or cross over?
This is the hour of change, and within it,
We stand on the border of light.
What lies before us?
Shall we draw back my brother, my sister,
Or cross over?

A strange way of saying "hello, nice to meet you, I am here?" I don't think so. You invited me to be your Intentional Interim Rabbi, because Temple Emanu-El is at "an hour of change." The "hour of change" began before I arrived and will continue long after I leave. But my being here means that I am privileged to walk with you in that "hour of change" as Temple Emanu-El, this wonderful congregation in Westfield that I have admired from a distance for so many years, begins to cross over from a glorious past to what I trust will be an exciting and beautiful and sacred future.

Continued on Page 4

In this issue...

Celebrate Shabbat.....	2	Congregational Learning.....	10
B'Mishpachach.....	3	Education.....	11-12
High Holydays 5780.....	6-8	Tikkun Olam.....	13
Sukkot & Simchat Torah.....	9	Our Temple Community.....	14
		Donations to Temple Funds.....	16-17

Celebrate Shabbat

TEMPLE EMANU-EL Bulletin

756 East Broad Street, Westfield, NJ 07090

(908) 232-6770 Fax (908) 233-3959

www.tewnj.org

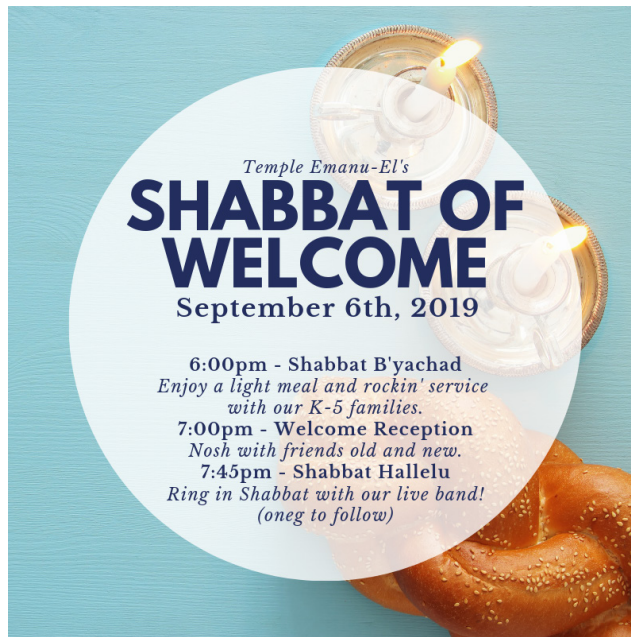
Bennett F. Miller..... Interim Senior Rabbi
Ethan Prosnit..... Rabbi
Charles A. Kroloff..... Rabbi Emeritus
Martha T. Novick..... Cantor
Michelle Rubel..... Associate Cantor
Brian Chartock..... Executive Director
Abra Lee..... Director of Youth Learning & Engagement
Jill Cimafonte..... Director of Early Childhood Education
Nicholas Tino..... Organist/Choir Director
Marc Epstein..... President
John Levy..... Vice President, President Elect
Peter Carlin..... Vice President, Administration &
Strategic Planning
Ellen Staple Vice President, Communication
and Membership
Jenn White.... Vice President, Education & Youth Dev.
Robert Kurtter..... Vice President, Financial Matters
(Treasurer)
Alayne Morgenthal..... Vice President, Social Action &
Religious Living
Carol Cohen..... Parliamentarian
Samuel Harrison..... Financial Secretary
Cheryl Marks Young..... Assistant Treasurer/Budget
Coordinator
Jennifer Goldstein..... Recording Secretary
Michelle Beck..... Corresponding Secretary
Riva Waller..... Sisterhood President
Mark Kabakow..... Men's Club President
Aidan Berman & Dylan Berger..... TEWTY
Co-Presidents
Jackie Grussgott..... Communications & Membership Mgr.
Jackie Master..... Bulletin Advertising

Affiliated with the Union for Reform Judaism

The Temple Emanu-El Bulletin is published by
TEMPLE EMANU-EL
756 East Broad Street
Westfield, New Jersey 07090

There is no subscription charge.

Shabbat of Welcome



Simchat Shabbat

Saturdays, September 14 & 28 and Saturdays, October 12 & 26 at 9:00 AM

Simchat Shabbat is an intimate, informal, intergenerational service with guitar music, fellowship, and bagels. Come experience the joy of Simchat Shabbat Services from 9:00-10:15 AM, followed by bagels and coffee.

shabbat for families @TEE

FREE AND OPEN TO ALL!



tiny tot shabbat

An interactive and meaningful prayer experience for families with children ages 0-6. Featuring music, movement, a special craft and more.

SATURDAY, OCTOBER 19 AT 9:30AM

shabbat b'yachad

Bringing families with children in grades K-5 b'yachad – together – to explore the magic of Shabbat. Beginning with a light meal, followed by services featuring our own visual prayer book.

**FRIDAY, SEPTEMBER 6 AND
OCTOBER 18 AT 6:00PM**



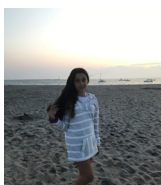
temple emanu-el of westfield

WWW.TEWNJ.ORG

B'Mishpachach במשפחה Within the Family

B'nai Mitzvah

The congregation will celebrate the following b'nai mitzvah:



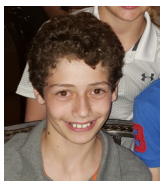
September 7
10:45 AM in the Chapel
Ella Oberstein
Daughter of Tammi and Todd Oberstein



September 7
5:00 PM in the Sanctuary
Noah Petrassi
Son of Sarah and Craig Petrassi



September 14
10:30 AM in the Sanctuary
Gavin LaConti
Son of Lauren and Jonathan LaConti



September 14
2:30 PM in the Sanctuary
Samuel Zafra
Son of Lauren and Steve Guberer



September 14
5:00 PM in the Sanctuary
Sawyer Chan
Son of Melanie and Laxon Chan



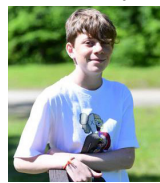
September 21
10:30 AM in the Sanctuary
Jake Ben-Hayon
Son of Erin and Ellan Ben-Hayon



September 28
10:30 AM in the Sanctuary
Lila Martin
Daughter of Sharon and David Martin



October 5
10:30 AM in the Sanctuary
Morgan Hoch
Daughter of Ellen and Andrew Hoch



October 5
10:30 AM in the Sanctuary
Harrison Ostroff
Son of Lisa and Charles Ostroff



October 12
10:45 AM in the Chapel
Zoe Weinberg
Daughter of Amy Eisenstein and Alan Weinberg



October 19
10:30 AM in the Sanctuary
Eden Gabbai
Daughter of Tara and David Gabbai



October 19
10:45 in the Chapel
Leah Hoffman
Daughter of Deborah and Dan Hoffman



October 26
10:30 AM in the Sanctuary
Alex Linsen
Son of Cindy and David Linsen



October 26
10:45 PM in the Chapel
Matthew Passante
Son of Juliet and Thomas Passante

In Memoriam

We remember those from our extended Temple family:

Richard Lickhalter

Father of Lisa Bleich

Fred Holtzman

Father of Stephen Holtzman

Verna Lemberg

Mother of Bruce Lemberg and aunt of Barry Lemberg

Sheila Carol Wolfson

Mother of Hope Fields and Stacey Lopez

Barbara Perlin

Mother of Ben Perlin

Eli Fishman

Father of Ron Fishman

Congratulations

Karen and David Sanders on the marriage of their son, Matthew to Colleen Caty

Deborah Blum on the marriage of her son, Sam to Christina Ji
Tanya and Don Whellan

on the marriage of their granddaughter, Rachel Mack to Joshua Kolsky

Mildred and Ed Werner on the birth of their first grandchild, Blair Ruth Werner

Jeanne and Mark Shottland on the engagement of their son David to Sophie Wilson

Deena and Lewis Ochs on the birth of a granddaughter, Alexandra Charlotte Ochs

Barbara and Sam Kahn on the birth of a granddaughter, Emme Jade Kahn

Nancy and Steve Manket on the birth of a granddaughter, Georgia Manket Diamonstein

Carol Jassin on the engagement of her daughter, Kristen to Jeff Gecker

A message from Ellen Staple

As Vice President of Communication and Membership, I would like to take this opportunity to share some of the exciting accomplishments that have been made by our committee, as well as some of the initiatives that we are working on.

Beginning this year, we formed an engaging and enthusiastic Membership Committee which meets once a month to brainstorm, plan and execute initiatives to foster a warm and engaging environment for our members.

This spring, we successfully participated in a community outreach event at the JCC and met many potential new members. In August, we had our New and Prospective Member BBQ where we entertained about 100 guests and shared with them what a truly special place Temple Emanu-El is.

We are always looking for members to join our committee and I invite all of you come to a meeting and become involved.

Please feel free to reach out to me at Mommystaple@att.net if you have any questions. I would love to talk to you.

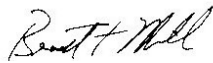
Divrei Halev - Words from the Heart

Continued from page 1

It's true -- you and I, our clergy and lay leadership, the entire congregation -- "we stand uncertain on the border of light." And we ask, "What lies before us?" As we cross over, let's hold each other in an embrace of kindness and love, a sacred embrace, brothers and sisters, together, and build a future based on a glorious past, a future in which generations to come will declare, "our parents and grandparents turned a darkness into a sacred community of light which they called Emanu-El. On Broad Street, they built a sacred congregation, open and welcoming to all."

I am grateful to you for your welcome, for the privilege to be your Intentional Interim Rabbi. During the year ahead, I look forward to walking together with you, holding hands, sharing together in a precious embrace, and guiding you as we all cross over into a new border of light, ready to celebrate both past and future.

And I invite you to come to the Temple to meet with me in my office. My door is always open.



- Bennett F. Miller

Selichot - Saturday, September 21 at Temple Beth Ahm Yisrael in Springfield

For many Jews, the High Holyday season begins with Rosh Hashanah and the start of the new month of Tishrei. Jewish tradition, however, teaches that the preceding month of Elul is a time of soul-searching and reflection to prepare oneself for the magnitude of the Days of Awe. It is during this time that we observe Selichot.

COMMUNITY WIDE SELICHOT

SATURDAY, SEPTEMBER 21

Join us for a night that ushers in the sacred themes of the High Holydays through community, reflection and prayer at Temple Beth Ahm Yisrael.

8:00 PM - Shmoozing and refreshments

8:30 PM - "Choosing Your Own Jewish Adventure." Join clergy from across Union County for an interactive and fast-paced conversation about some of the most fascinating texts that teach us how we make choices.

10:00 PM - Selichot Service

INCLUDING
PARTICIPATION FROM
COMMUNITY SYNAGOGUES
AND THE RABBINIC VAAD
OF UNION COUNTY:

Congregation Beth Israel,
Temple Beth Ahm Yisrael,
Temple Beth-El Mekor Chayim,
Temple Beth O'r Beth Torah,
Temple Emanu-El,
Temple Sha'arey Shalom,
Temple Shalom

Temple Beth Ahm Yisrael
60 Temple Drive, Springfield

Create a Jewish Legacy

Remembering Temple Emanu-El in your will or estate plan ensures that your work and your values will continue when you are no longer here. It also serves as an example of ongoing kindness to your loved ones. It teaches them the value you've placed on supporting Temple Emanu-El and the Jewish community. Legacy giving is for everyone. Make the most meaningful gift you can. Every gift is important.

For more information on how you can create your Jewish Legacy, please contact Brian Chartock, our Executive Director, at 908-232-6770 x114.

Create a Jewish Legacy is part of a nationwide program to sustain the future of Jewish organizations by increasing after-life giving. It is sponsored locally by The Jewish Community Foundation of Greater MetroWest, in partnership with the Harold Grinspoon Foundation.

I am interested in learning more about how I can assure Jewish tomorrows through the Create a Jewish Legacy program at Temple Emanu-El. Please contact me!

The best time to reach me: _____

Best way to reach me: _____
(Phone/email address)

Sincerely, _____
(Please print your full name)



Help Feed the Hungry

Is this not the fast I look for: Is it not to share your bread with the hungry? *-Isaiah.*

Each year during the High Holydays, our Temple family collects hundreds of pounds of food for donation to the Westfield Food Pantry. Please join us again this year as we continue our efforts to help feed hungry families in our larger community.

As in the past, empty grocery bags will be distributed to congregants after Rosh Hashanah services. We ask that you return the bags filled with non-perishable food items on Yom Kippur morning, October 9. Volunteers from the Westfield Food Pantry will be stationed in both parking lots (at Temple Emanu-El and the First Congregational Church) to assist with the collection. The following items are greatly needed: canned foods such as tuna, beans, soup, fruit, vegetables, chili, and nutritional supplements for the elderly; boxed foods such as rice, pasta, cereal, pancake mix, and instant potatoes; and peanut butter and jelly.

Todah rabah for your continued generosity.

Planned Giving Opportunities

Bequests. Codicil. Residuum?

Those words aren't typos, they are real terms used in legacy giving. There's a lot of jargon out there surrounding charitable donations - let us help to demystify it!

Did you know that:

...a bequest is the most common planned gift, but there are other options as well? Some of those options are a charitable gift annuity, charitable remainder trust or life insurance policies. Consider giving a gift to Temple Emanu-El that will live on through the years.

Contact Brian Chartock for more information or details on how Planned Giving can fit into your plans. We will try our best to answer all of your planned giving questions.

If you are 70 1/2 or older, you can still use your IRA for charitable contributions during your lifetime. Qualified Charitable Distributions (QCD) have distinct tax advantages. A QCD is not treated as taxable income; therefore, it has no effect on taxable income. This allows for greater amounts to be transferred to charities tax-free and can help the donor avoid the aforementioned negative financial consequences.

Did you know we have new stock transfer info?

Please contact Kathleen Stovall for instructions. kstovall@tewnj.org or 908-232-6770 x113.



High Holydays 5780

High Holyday Services 5780/2019

Community-Wide Selichot Celebration

Saturday evening, September 21

*Community-Wide Selichot Celebration at Temple Beth Ahm Yisrael in Springfield.....8:00 PM

Rosh Hashanah

Sunday, September 29

Erev Rosh Hashanah Services.....6:00 PM

Monday, September 30

Early Morning Service8:30 AM

Parallel programs for grades K – 5.....8:30 AM

**Kol Haneshamah Service at FCC.....9:45 AM

***Kulanu Service.....10:00 AM

Late Morning Service.....11:30 AM

Tiny Tot Service.....3:00 PM

Tuesday, October 1

Morning service, Second Day.....10:00 AM
Tashlich at Mindowaskin Park at the conclusion of this service

Yom Kippur

Tuesday, October 8

Kol Nidre Service.....8:00 PM

Wednesday, October 9

Early Morning Service8:30 AM

Parallel programs for grades K – 5

**Kol Haneshamah Service at FCC*9:45 AM

***Kulanu.....10:00 AM

Late Morning Service.....11:30 AM

Parallel Discussions (Part I)

Immediately after early morning service

Parallel Discussions (Part II)

Immediately after late morning service

Tiny Tot Service.....2:00 PM

Afternoon, Yizkor & Neilah Services.....3:15 PM

Admission by Ticket and Photo ID Only

*Selichot will be located at Temple Beth Ahm Yisrael in Springfield - 60 Temple Dr, Springfield Township, NJ 07081.

**FCC is First Congregational Church, which is located at 125 Elmer Street in Westfield.

***Kulanu will be located at Wilson School - 301 Linden Ave, Westfield, NJ 07090.

High Holydays will be here before you know it!

Please fill out your High Holyday ticket order forms in our new online form at www.tewnj.org/highholydays OR mail them back to the Temple office ASAP! **We've extended the deadline until Monday, September 9.** To make sure your tickets come on time, please make sure your ticket information has been received by then.

Help Usher In the New Year!

We are looking for a few ushers to aid us in our efforts to assist our congregants and maintain the usual level of decorum in our High Holyday services! If you normally attend Erev Rosh Hashanah, early service either Rosh Hashanah or Yom Kippur or second day Rosh Hashanah and would be willing to serve as an usher, you would be greatly appreciated. If you can help, please contact Bob Kendler, at 908-232-1893 or bobkender@gmail.com.

Assisted Listening Device System

A few assisted listening devices are available in the Sanctuary, and large-print prayer books are available in the Sanctuary and at Kol Haneshamah services. Our ushers will be happy to assist you.

Wheelchairs and Low Mobility

To reserve a wheelchair space for any of our services, please contact Jackie Master at jmaster@tewnj.org or by phone at 908-232-6770x133. We have accessible stalls in several of our bathrooms and at Wilson School. Any driver with a passenger who uses a wheelchair or has low mobility is welcome to pull to the accessible parking entrance at the back of the Temple building to drop them off before going to park their car.

High Holyday Experiences for Youth

Registration for these programs is completely online at www.tewnj.org/highholydays

Rosh Hashanah Morning - Monday, September 30 at 8:30 AM

Yom Kippur Morning - Wednesday, October 9 at 8:30 AM

Please drop your children off at 8:15 AM; services begin at 8:30 AM.

REGISTRATION IS REQUIRED to participate in all programs listed below.

Babysitting

Babysitting is offered for toilet-trained 2 - 4 year olds during the early Sanctuary Service on Rosh Hashanah and Yom Kippur for a fee. Registration is due by September 20. For more information and to register your child, please visit our website.

Youth Programming and Worship for K- 5th Grade

Registration for Children's Parallel Programming and teen volunteers can be found in the High Holyday section of our website. Registration is due by September 20. For more information please contact Samantha Eichert at seichert@tewnj.org or by phone at 908-232-6770 x123.

High School Volunteers

9th – 12th graders can volunteer in our Babysitting and Youth Parallel Programming. Volunteers are accepted on a first-received basis with priority given to teens who currently participate in our Madrichim Program, are enrolled in our Religious School and/or participate in our youth groups.

Kulanu

Simply fill out the member and/or guest ticket order forms and select Kulanu as your service option. Seating is limited; we can only accommodate the first 250 people who sign up. Tickets must be issued for attendees of all ages.

For more information about High Holydays, please visit our website:

www.tewnj.org/highholydays

High Holydays 5780

High Holyday Ticket Information

Please note the following policies concerning High Holyday tickets:

- ✧ At Temple Emanu-El services, every attendee, including children of any age (infant through college), will need a ticket. Everyone high school aged through adult needs a photo ID with their ticket.
- ✧ At Kol Haneshamah services, tickets must be issued for attendees of all ages. One parking permit per family per Holyday will be issued as well.
- ✧ Your tickets will be delivered via email - same as last year. You can print out the email to show at the door, or you can show the ticket (email) on your smartphone. If you do not have an email address you may come into the Temple and pick up your ticket or it will be held for you at the door.
- ✧ Please have your tickets and ID available prior to reaching the door to save time.
- ✧ Congregants with tickets and photo ID in hand may enter as directed by the ushers.
- ✧ Congregants without tickets or without a photo ID will be directed to a table where their membership can be confirmed.

Please note the following information:

- ✧ Tickets will be issued at no cost to members who are current with their Temple financial obligations and who have sent in their ticket order form (or filled them out online). Order forms for your ticket(s) and additional guest tickets were mailed in June and can be found on our website.
- ✧ Guest tickets for adult children attending **either** Rosh Hashanah or Yom Kippur services, but not both, cost \$90 per ticket.
- ✧ Guest tickets for adult children attending both Rosh Hashanah and Yom Kippur services and all other guests, whether attending services for Rosh Hashanah only, or Yom Kippur only, or both cost \$180 per ticket. You can mail your check with your form or pay with your credit card by calling the Temple office.
- ✧ There is no charge for anyone 26 and under. Tickets are required for all attendees. Please remember that Temple Emanu-El participates in the URJ reciprocity program. All members in good standing at another congregation may receive tickets for free. Simply have their temple let us know that they will be attending! Still include them on your Guest Ticket order form and jot down "recip" next to their name(s).
- ✧ Please do not ask for exceptions to these rules.
- ✧ Tickets will be emailed approximately 2 weeks prior to Rosh Hashanah. Do not delete the email that contains your electronic ticket.

Photo ID required with ticket.

If you or any family member or guest do not carry items on the Holydays, call the Temple Emanu-El office and let us know.

High Holyday Decorum

- ✧ For safety's sake, strollers are not permitted in the Sanctuary due to fire regulations.
- ✧ Please respect the dignity of the service, and refrain from leaving your seat during the sermon or at any time when the Holy Ark is open.
- ✧ If your child becomes restless during the service, please take him or her to a more suitable area.
- ✧ Seats may be saved up to 10 minutes before services begin.
- ✧ Please be on time – taking seats after services have started is disruptive to those in the area.
- ✧ In deference to those with allergies, please refrain from using heavy fragrances.

Kulanu

We offer a prayer service we call Kulanu, meaning "all of us". This unique worship experience is open to attendees of all ages, though it is designed as a prayer option for those families with K-7 students. Services will be led by our new Student Rabbi and a songleader, along with appearances from our own TEE Clergy. This interactive and intergenerational service includes a youth-oriented prayer book, guitar accompaniment, as well as stories and meaningful discussion. At Kulanu, we intend kids and adults to share a time of connection, celebration, and awe. Open to Temple Members (and their guests) and ECE families. Space is limited, pre-registration is required.

Location: Wilson School – 301 Linden Ave, Westfield

Monday, September 30 @ 10:00 AM

Wednesday, October 9 @ 10:00 AM

Kol Haneshamah

Our alternative High Holyday worship service is held on the first day of Rosh Hashanah and on Yom Kippur. Kol Haneshamah aims to provide a worship experience that is participatory, contemplative, and informal. Led by members of our clergy and guitarist/songwriter Rick Calvert, this is an adult-oriented service but very appropriate for children and teens. Tickets are required.

Location: First Congregational Church – 125 Elmer Street, Westfield

Monday, September 30 @ 9:45 AM

Wednesday, October 9 @ 9:45 AM

Shofar Class

Cantor Novick will hold her annual Shofar Blowing Class on Wednesday, September 18 at 6 PM in her office for any young person who is interested in learning how to blow the shofar or brushing up on his or her skills. You must bring your own shofar to the class. Contact Susan Schuman at 908-578-4856, if you need to purchase one from the Sisterhood Gift Shop.

High Holydays 5780 Continued

The Shofar

The shofar, made from the horn of a ram, is sounded throughout the High Holyday period, beginning during the preparatory days of Elul. It also is sounded during the Rosh Hashanah service and at the end of Yom Kippur. The shofar is always curved or bent, symbolizing our humility as we stand before God and confront our actions. The celebration that ultimately evolved into Rosh Hashanah was originally called Yom T'ruah (Day of Sounding the Shofar).

One of the world's oldest wind instruments, the shofar played an important role in Jewish history long before it became associated with Rosh Hashanah. It is mentioned throughout the Bible as a central element in ritual observance. For example, the shofar was sounded at the new moon and at solemn feasts. The Book of Exodus (19:16; 20:15) describes how the shofar was blown at Mt. Sinai to prepare the people for the giving of the Torah. The Book of Joshua (6:1-20) details the blowing of the shofar as part of the conquest of Jericho.

There are four different shofar "calls," each with a unique name, used during the High Holydays: *t'kiah* (one long blast), *sh'varim* (three short blasts), *t'ruah* (nine quick blasts) and *t'kia g'dolah* (one very long blast). Today, these sounds suggest different approaches to our annual cheshbon hanefesh (accounting of our activities of the past year), which we review during this season. The shofar blasts echo different rhythms and patterns in our daily lives. Various explanations surround the custom of blowing the shofar on Rosh Hashanah. The link with *Yom T'ruah* (Day of Sounding the Shofar) was an early one, but there are many others. The great Jewish philosopher Maimonides viewed the sounding of the shofar as a call to repentance.

The most common explanation for blowing the shofar during the Rosh Hashanah service, however, derives from the story of the Akeidah (the binding of Isaac) in Genesis 22, which we read on the same day. The sacrifice of Isaac was averted when Abraham substituted a ram for the boy. Although the key message focuses on Abraham's faith and against human sacrifice, the story also became a basis for use of a ram's horn on Rosh Hashanah.

- From www.reformjudaism.org

Book of Remembrance

Each year, Temple Emanu-El publishes a Yom Kippur Book of Remembrance. It contains the names of members of our families who have passed away and whose memories we wish to honor at that sacred hour. If you have not already submitted your Book of Remembrance form, please make sure you submit it no later than Friday, September 6.

Information You Need to Know

Parking At Temple

In an effort to ease parking and traffic congestion during the High Holydays, the Westfield Police Department will implement the following procedures:

- Signs will be posted for parking on only one side of Jefferson Avenue from East Broad Street to Kimball Avenue.
- Jefferson Avenue will be a "one way" street from East Broad Street to Saunders Avenue.
- We ask drivers who can do so to drop off their passenger(s) with a wheelchair or low mobility at the Temple door and find street parking for themselves. See page 6 for more information.

Accessible parking permits are available upon request for congregants who require them. Call the Temple at 908-232-6770, ext. 133, as soon as possible to allow time to process the request. Reserved spots will only be held until 10 minutes after the service has begun (8:40 AM for Early service; 11:40 AM for Late service) so please be on time. If space is available, you can park in the parking lot. Parking lot spaces at Temple will be available on a 1st come, 1st served basis, after the number of needed handicapped spaces has been determined.

Parking At First Congregational Church (FCC)

Members who have requested tickets for Kol Haneshamah services at FCC will receive a Temporary Parking Permit provided by the Westfield Police Department - one permit per family per holyday you are attending. Please read the letter that comes with your permit(s) carefully as it will tell you where and how to park and how to display the permit. Lost or misplaced permits will not be reissued. By properly displaying the permit, you will not have to feed the meters. Anyone attending Kol Haneshamah services that does not display their permit properly will be responsible for paying the appropriate fees to park.

Out of respect for our neighbors, and the FCC neighbors, we should be particularly aware of where we park our cars. Please DO NOT block driveways, DO NOT park on people's lawns, and DO NOT create blind spots by parking too close to the corner. The police have in the past and will continue to issue tickets to those who violate the rules of the road. Remember, it is important to maintain the good relationships we have with the community.

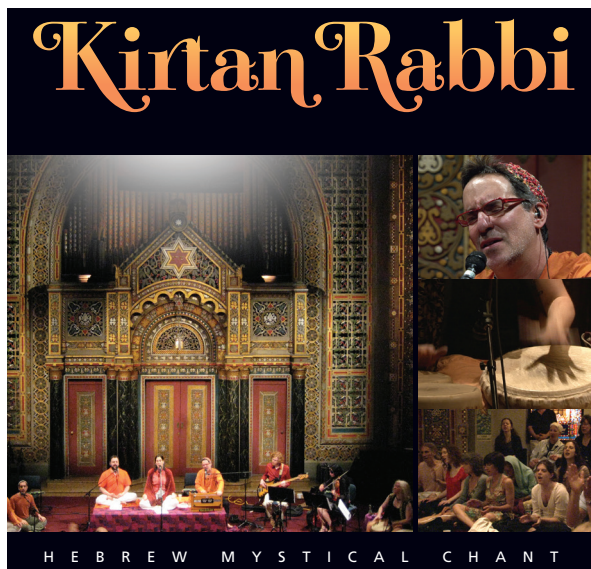
We want to acknowledge and thank the Westfield Police Department for allowing us the freedom of not worrying about or the need to carry change during our High Holydays.



Sukkot & Simchat Torah

The Kirtan Rabbi will be back for Sukkot!

Sunday, October 13 at 7 PM in Brody Chapel



Celebrate the holiday of Sukkot with the well-known teacher and chant composer Rabbi Andrew Hahn (the Kirtan Rabbi) for an evening of sacred call-and-response singing and devotional learning. Hebrew Kirtan is participatory chanting where short, sacred phrases from the Jewish tradition are treated as powerful, universal meditations. It is at once contemplative, ecstatic and mind-expanding fun!

Simchat Torah Celebration



Holiday Services

Sukkot

Sunday, October 13

Erev Sukkot Service 7:00 PM

Monday, October 14

Sukkot Family Program 10:00 AM

Sukkot Morning Service 10:00 AM

in Teva (outdoor space) if weather permits followed by Kiddush in the Sukkah 12:00 PM

Simchat Torah

Sunday, October 20

Simchat Torah Celebration 5:45 PM

Simchat Torah Service 7:00 PM

Sh'mini Atzeret

Monday, October 21

Sh'mini Atzeret with Yizkor 10:00 AM

“Shake your Lulav” this Sukkot!

Purchase your very own personal set of Lulav and Etrog. Simply label an envelope with your name, phone number, and the words “Lulav and Etrog.” Enclose \$45 either in cash or check made out to Temple Emanu-El, and either mail it to the Temple office or drop it off by 4:00 PM on **Thursday, October 3 by 4 PM. Pickup will be Monday October 7 after 12 PM, Thursday October 10, Friday, October 11 and Sunday, October 13 until 12 PM.**

Sukkot begins on Sunday night, October 13.

Questions? Please call Brian Chartock in the Temple office at 908-232-6770 x 114.

Congregational Learning

Something to celebrate? Remembering a loved one? Feeling grateful?

Making a contribution to a Temple Fund is a great way to honor a loved one's memory, acknowledge a special occasion, or express gratitude.

Please contact Carol Jassin at 908-232-6770 x 120 to make a donation.

To make your tribute online, or see a full list of available funds, please see our website:

www.tewnj.org/tributes

Memorial Plaques

Plaques are placed in the Sanctuary to memorialize a loved one. The light is lit on the anniversary of a loved one's death, and on Yom Kippur. Donation for a plaque is \$500. Please contact Carol Jassin at 908-232-6770 x 120 for more

Do you need help with shiva?

Temple Emanu-El's Shiva Help Committee can provide hands-on assistance and support. Some of the services we offer include:

- Waiting at the mourners' house to accept deliveries while others are at the funeral.
- Setting up food and/or turning on the coffee pot before mourners return.
- Providing shiva resources, checklists and useful contact information.

We want to be there for you and your family. Please call or email to let us know how we can help.

Marci Fisher
Marcifisher601@gmail.com
908-230-7452

Leslie Dickstein
Ldickeinstein@verizon.net
908-596-0079

Holy Scrollers Torah Study

Saturdays, 8:15 AM at the Lavy House

Every Shabbat this 50-minute discussion and study will focus on the Torah Portion of the week, Jewish ideas and values, and the task of living a life of meaning.

Tuesday Morning Bible Class

Tuesdays, beginning October 15 at 9:30 AM

How does the Torah fit in my story? Participants study Bible plus the latest events of concern to the Jewish people. Feel free to drop in, you are always welcome!

Lunch and Learn with Rabbi Kroloff

Informal and lively! Discussion topics will include contemporary events, films of Jewish and general interest, spiritual issues, aging wisely, family concerns, the rabbi's "struggles," Israel, the American Jewish community, and recent developments in Jewish life.

Donations to support this program are welcome. Kindly direct them to the Rabbi Charles A. Kroloff Fund for Jewish Learning.

Monday, September 16 at 11:30 AM - "Judaism for Non-Believers"

Monday, October 28 at 11:30 AM - "What Five Books Should You Read to be an Educated Jew?"

Please save the date on Monday, November 18 at 11:30 AM for our next

For the most up-to-date information on congregational learning, please see your weekly eblast or check out our website: www.tewnj.org

Youth Group Update



WELCOME BACK!
Extreme Yeladim and Extreme Bonim
GRADES 3-6
Please join us for our first Junior youth group event of the year
COOKIE DECORATING CONTEST
When: Sunday, October 6, 2019 10:45 am to 12pm
Where: Temple Emanu-El of Westfield in the Lavy House
The event is free! Lunch will be: **PIZZA!**
RSVP by Friday, September 27, 2019
If you have any questions or dietary concerns please contact Kayla Zambrana at kzambrana@tewnj.org.



Extreme Bonim Presents
HARVEST FESTIVAL
Come and hang out to enjoy a day of hay rides, pumpkin picking, corn mazes, food and lots of opportunities for Instagram pics and Snap stories. Have fun and finish the day off with Havdalah and friends!
Saturday, OCTOBER 26TH, 2019
Where: Cheesequake Farms
191 Route 34, Matawan, NJ 07747
5th and 6th graders
Time and Price TBD
More info to come! If you have any questions please email Kayla Zambrana at kzambrana@tewnj.org!

Education

Early Childhood Education

There is always something happening in our ECE!



Our campers enrolled in Camp Wonder spent the summer making magic potions, learning about animals with wings, splashing with water on the playground, and of course, learning in TEVA (our beautiful outdoor classroom). It was also a special treat to have our infants here all summer long too! They joined in the fun- especially playing outside with water and bubbles.

This September our infants will be "moving up" into our BRAND NEW TODDLER ROOM and we will be welcoming a new group of infants to our program to

begin their Jewish journey.

It is so wonderful to be a part of this transformative time as we watch our program have the ability to accommodate working families from 7 AM - 6 PM while still offering more part-time options for those interested. We are so fortunate to have been able to create 2 beautiful classroom spaces for these classes and we are so grateful to the Board of Trustees along with the entire community for their support.

We have ONLY 2 openings available in our infant room (starting in November) for babies 3-12 months. If interested, please contact our ECE Office at 908-232-7663 or email Jill Cimafonte, Director of Early Childhood Education at JCimafonte@tewnj.org.



Meet the new Youth Learning and Engagement Team!

Join us for Opening Day, Kgn - 5th gr and Ma'ayan, Sunday, September 15 from 8:45 -10:45 AM. Find out which educator each of these fun facts belongs to:

- This educator has lived in both in Sydney, Australia and Los Angeles, California.
- This educator's favorite dessert is chocolate chip cookies.
- This educator is the one who is not a die hard Philadelphia sports fan.
- This educator's favorite movie is Shrek.
- This educator loves pistachio ice cream and stuffed artichokes.
- This educator's favorite animal is the lemur.
- This educator used to work on a ranch taking care of 20+ horses.



Attention B'nai Mitzvah families:

DID YOU KNOW that much of the information you will need for your special day is now up and running on our website?

In an effort to go green(er), we have added the following:

- B'nai Mitzvah questionnaire
- Thorough explanation about parent ushering
- Erev Shabbat schedules
- Videography/photography rental forms

These are just some of the important pieces of information you can access by clicking on the **LEARNING** tab when you go into tewnj.org. But we are not done yet; there is much more to come. And finally, be on the lookout for our newly updated handbook (formerly known as the Madrich).

Please visit us in the upcoming months when we hope to have additional forms and details available to you. If you have any questions, please reach out to Joanne Pass, our B'nai Mitzvah Coordinator at: 908-232-6770, ext. 110 or Brian Chartock, our Executive Director at: 908-232-6770, ext. 114.

We're Here For You

Your clergy are committed to providing attentive, compassionate, and excellent pastoral care. Please call us at 908-232-6770 to let us know of your needs, or to inform us of a pastoral or life cycle emergency. We ask that you avoid the use of e-mail to communicate pastoral or life cycle issues. E-mail cannot be relied upon to provide timely and appropriate responses.

Education Continued

Save these dates for upcoming events or subscribe to the Youth Learning and Engagement calendar to upload and receive updates throughout the year.

September

Thursday, September 5

7:00 - 8:30 PM - Orientation for NEW Madrichim & NEW Madrichim Parents

Sunday, September 8

9:00 - 11:30 AM - Madrichim Opening Session

Tuesday, September 10

Learning Lab for 6th Gr opens

Saturday, September 14

NFTY Leadership Education and Development Day

Sunday, September 15

8:45 - 10:45 AM - Opening Day for Families in Kgn – 5th Gr and Ma'ayan

Tuesday, September 17

4:00 - 5:45 PM - First Tuesday Session for 4th & 5th Gr

Wednesday, September 18

4:00 - 5:45 PM - First Wednesday Session for 4th & 5th Gr

Thursday, September 19

4:00 - 5:45 PM - First Thursday Session for 4th & 5th Gr

Saturday, September 21

9:45 AM - 1:00 PM - 6th Grade Nisayon Event at Trailside Nature & Science Center: Teva, Torah & T'filah

Sunday, September 22

8:45 - 10:45 AM - Religious School session for Kgn – 5th Gr and Ma'ayan

10:15 - 11:15 AM - Consecration service and reception Honoring New Students

11:00 AM - 12:30 PM - First Mitzvah Corps Session for 8th & 9th Gr

6:00 - 7:00 PM - Cafe Torah for 11th & 12th Gr

Wednesday, September 25

5:45 - 7:45 PM - First Nisayon Session for 6th Gr

October

Tuesday, October 1 - Thursday, October 3

No School – week of Rosh Hashanah

Sunday, October 6

10:45 AM - 12:30 PM - Extreme Yeladim & Extreme Bonim opening event

11:30 AM - 12:30 PM - YLE Parent Gathering

Tuesday, October 8 – Thursday, October 10

No School – week of Yom Kippur

Sunday, October 13

No School – Columbus Weekend

Tuesday, October 15

7:00 - 9:00 PM - First HaMakom Session for 7 - 12th Gr

Wednesday, October 16

7:15 - 7:45 PM - 6th Grade Nisayon Parent Orientation

Saturday, October 19 – Sunday, October 20

NFTY-GER Fall Kallah at Camp Harlam

Sunday, October 19

9:00 AM - 1:30 PM - 6th Grade Nisayon Event: Hazan et Hakol/Feeding the Hungry

Friday, October 25 – Saturday, October 26

5th Grade Overnight Retreat to Camp Harlam

Saturday, October 26

Extreme Bonim Event

Sunday, October 27

11:00 AM – 12:00 PM - Madrichim Seminar for New AND Returning Madrichim

Thursday, October 31

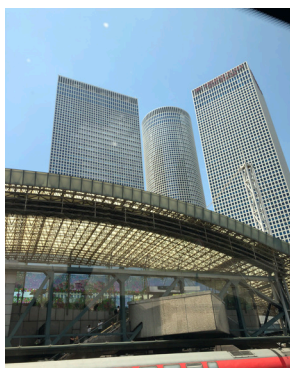
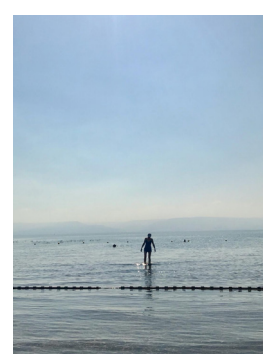
4:00 - 5:45 PM - No School



Share your Jewish Connection

This summer, we had the opportunity to travel through Israel with 200+ educators representing delegations from the USA, France, Morocco and Israel as participants in the JNF- KKL World Educators Conference. We look forward to sharing with you highlights from our learning about JNF's work in Israel, which focuses on Community Building, Disability Inclusion, Zionist Education & Advocacy, Forestry & Green Innovations, Heritage Sites, Research & Development, and Water Solutions.

Throughout the year, our congregational family will strive toward a deeper connection to our Judaism through the theme of Am'cha: Your People. Your place. Your story. While in Israel, one activity helped us to find our connection through photography. Here are a few of the groups' selections. We want to know what you see in these photos that speaks to you and reminds you of a special connection to your Judaism and your story. And, we welcome you to join us by submitting your own photos of something that represents your Judaism. Please share your photos here: <http://bit.ly/jewish-connection>



Mandy Reichman Feeding Program - Bagged with Love

With the holidays approaching we'd like to give our volunteers a look-ahead of our schedule for the coming months.

Tuesday, September 3	Closed for Labor Day
Tuesday, September 10	Open as normal – 5:10 PM in the Temple kitchen
Tuesday, September 17	Open as normal
Tuesday, September 24	Open as normal
Tuesday, October 1	Closed for Rosh Hashanah
Tuesday, October 8	Closed for Yom Kippur
Tuesday, October 15	Closed for Sukkot
Tuesday, October 22	Closed for Simchat Torah
Tuesday, October 29	Open as normal

As always, we thank all of our volunteers and supporters for their dedication and hard work. We wish everyone happy and healthy holidays.

Meryl and Barry Reichman
Jill and Jeffrey Reichman
Directors

Civil Rights Trip Informational Meeting

“For we were once strangers in a strange land.”

We are excited to announce Temple Emanu-El's Civil Rights Journey, April 16-19, 2020. (The Trip will begin the evening of April 16 in Atlanta).

Join fellow Temple Emanu-El Members and Rabbi Ethan Prosnit for a meaningful trip to the South, with stops in Birmingham, Selma, and Montgomery. Learn on location about the Civil Rights Movement and the impact the Jewish Community had on this important chapter of American History. Highlights will include: visits to the Rosa Parks Museum and the Civil Rights Institute, a Creative Shabbat Tefilah at the Edmund Pettus Bridge, and tours of Freedom Park and the 16th Street Baptist Church.

There will be an Informational Meeting on Thursday, September 12 at 7:30 PM at the Temple.

Please RSVP to Carol Jassin at cjassin@tewnj.org or 908-232-6770, ext. 120 or RSVP online here: www.tewnj.org/civil-rights-informational-meeting

We hope you consider joining us on this journey!

Marcy Lazar and Ellen Tripp
Civil Rights Journey Chairs

How to Get Involved with Social Justice Activities at TEE

Join us for our Tikkun Olam/Social Action Meeting on September 11 and October 23 at 7:30 PM.

The committee usually meets the second Wednesday of every month to help us plan upcoming Social Action programs and create a vision for the future. Questions? Contact the Tikkun Olam Co-Chairs David Burk and Daniela Shebitz at tikkunolam@tewnj.org.

Sign Up to be a member of the Caring Community

Can you give a ride to a Temple member in need of transportation to services or to a doctor's appointment? Can you cook a meal for a homebound senior or a congregant going through a difficult illness? Can you deliver a challah to a congregant celebrating something good or going through a challenging time? Sign up for the Caring Community email list by contacting Pamela Clarke, pamelac Clarke@achievementfirst.org or Lynda Wald, Lynda.wald99@gmail.com.

Volunteer for one of the shifts at the Westfield Food Pantry on the 2nd or 4th Wednesday of each month (9:15 AM – 11:15 AM). To volunteer to sign up contact Alice Fertig, Asfertig@gmail.com.

Participate in our Saturday Morning Fun Club for Refugees, Mitzvah Garden, Blankets of Love, Mandy Reichman Feeding Program, or one of the other wonderful events we do at Temple Emanu-El. For more information about any of these programs, contact: tikkunolam@tewnj.org.

Our Temple Community

Library News....

Your synagogue is more than a place for prayer. The Temple library is not just books, shelves and furniture. It is a place to collaborate, connect and build community.

Come in and experience another side of what a great Temple has to offer!

Just a taste of some new books you will find....

- *Antisemitism: Here and Now* by Deborah E. Lipstadt
 - *The 100 Most Jewish Foods: A Highly Debatable List* by Alana Newhouse
 - *Not Our Kind: A Novel* by Kitty Zeldis
 - *The Only Woman in the Room: A Novel* by Marie Benedict
- You can leave a message at 908-232-6770, ext. 131, or email us:
Brett Harris: bharris@wilentz.com
Janice Kessler: 128beans@comcast.net
Bettye Barcan: bgb43@verizon.net

Hadassah

All are welcome to a red, white and blue (indoor) picnic celebrating Eleanor Roosevelt's birthday with Hadassah AND Eleanor Roosevelt on September 23 at 12:00 in Greifer Sacks Hall.

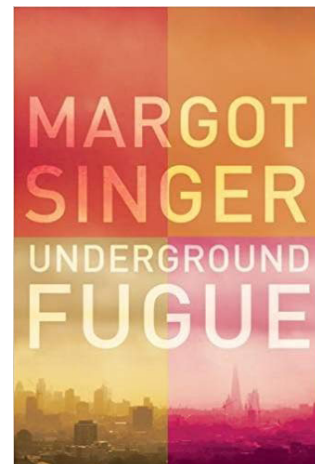
Linda Kenyon will present a one woman show "A Life of My Own-Meeting Eleanor Roosevelt". Please bring lunch and a special picnic dessert will be provided. Looking forward to seeing all of you at a very special start of the new year for Hadassah! Oh, and bring your friends too!

Sisterhood Book Club

Our book club dates for 2019 - 2020 are as follows on Wednesday evenings at 7:30 PM in Lehr Library:

- Wednesday, September 11
- Wednesday, November 13
- Wednesday, January 8
- Wednesday, March 11
- Wednesday, May 13

On September 11, our book selection is, *Underground Fugue* by Margot Singer. *Underground Fugue* is the 2017 Edward Lewis Wallant Book Award Winner.



Men's Club and Sisterhood Trip

Temple **עמנו אל**
Emanu-El of Westfield

Men's Club & The Sisterhood
Present a Day in Philadelphia at The



NATIONAL MUSEUM OF
AMERICAN JEWISH
HISTORY

A Smithsonian Institution Affiliate

Sunday-October 6

Tour Starts at 12:00

Get on the Bus! at Temple at 9:00

BRING YOUR FAMILY & FRIENDS!!

**Cost: Adults \$25
 Children \$20**

**Men's Club providing
Bagels & Nosh on Bus**

Please RSVP by Friday, September 27
Steve Goldberg
(732) 887-7754-ssq772@comcast.net

September/October 2019

For up to date information or changes visit www.tewnj.org/events

- Please note that Bar/Bat Mitzvah dates are no longer listed on this calendar. See page 3 for this information.
- The Early Childhood Education and Religious School calendar can be found on our website at www.tewnj.org.
- Holy Scrollers Torah Study & Saturday Morning Minyan will take place at the Lavy House.

Monday, September 2

Labor Day - All Offices Closed

Tuesday, September 3

7:30 PM Welcome to Rabbi Miller Program

Wednesday, September 4

7:00 PM Blankets of Love

Friday, September 6

6:00 PM Shabbat B'yachad

7:00 PM Shabbat of Welcome

7:45 PM Shabbat Hallelu

Saturday, September 7

8:15 AM Holy Scrollers Torah Study

9:30 AM Saturday Morning Minyan followed by Light Brunch & Discussion

Monday, September 9

4:00 PM Dance Fitness

Tuesday, September 10

5:10 PM Mandy Reichman Feeding Program

7:30 PM Sisterhood Meeting

Wednesday, September 11

7:30 PM Sisterhood Book Club

7:30 PM Tikkun Olam/Social Action Committee Meeting

Thursday, September 12

7:00 PM Adult B'nai Mitzvah Class

7:30 PM Civil Rights Informational Meeting

Friday, September 13

7:45 PM Erev Shabbat Service

Saturday, September 14

8:15 AM Holy Scrollers Torah Study

9:00 AM Simchat Shabbat

9:30 AM Saturday Morning Minyan followed by Light Brunch and Discussion

10:00 AM Saturday Morning Fun Club

Monday, September 16

11:30 AM Lunch & Learn with Rabbi Kroloff

4:00 PM Dance Fitness

Tuesday, September 17

5:10 PM Mandy Reichman Feeding Program

Wednesday, September 18

6:00 PM Shofar Blowing Class with Cantor Novick

Friday, September 20

7:45 PM Zimrat Shabbat Service

Saturday, September 21

8:15 AM Holy Scrollers Torah Study

9:30 AM Saturday Morning Minyan followed by Light Brunch and Discussion

10:00 AM Saturday Morning Fun Club

8:00 PM Selichot at Temple Beth Ahm in Springfield

Sunday, September 22

8:45 AM Lenape Park Clean Up/Building Bridges

9:00 AM Men's Club Food Prep and Delivery

Monday, September 23

4:00 PM Dance Fitness

Tuesday, September 24

5:10 PM Mandy Reichman Feeding Program

Thursday, September 26

7:00 PM Adult B'nai Mitzvah Class

Friday, September 27

5:00 PM Pre-Oneg

6:00 PM Erev Shabbat Service

Saturday, September 28

8:15 AM Holy Scrollers

9:00 AM Simchat Shabbat

9:30 AM Saturday Morning Minyan followed by Light Brunch & Discussion

Sunday, September 29

Erev Rosh Hashanah

6:00 PM Erev Rosh Hashanah Services

Monday, September 30

Rosh Hashanah First Day - All Offices Closed

8:30 AM Rosh Hashanah Early Morning Service

8:30 AM Parallel Programs for grades K - 5

9:45 AM Rosh Hashanah Kol Haneshamah Service at FCC

10:00 AM Rosh Hashanah Kulanu Service at Wilson School

11:30 AM Rosh Hashanah Late Morning Service

3:00 PM Rosh Hashanah Tiny Tot service

Tuesday, October 1

Rosh Hashanah Second Day - All Offices Closed

10:00 AM Rosh Hashanah Second Day Services followed by Tashlich (Mindowaskin Park)

Wednesday, October 2

7:00 PM Blankets of Love

Friday, October 4

7:45 PM Shabbat Hallelu

Saturday, October 5

8:15 AM Holy Scrollers Torah Study

9:30 AM Saturday Morning Minyan followed by Light Brunch and Discussion

10:00 AM Saturday Morning Fun Club

Sunday, October 6

9:00 AM Men's Club/Sisterhood Trip to the American Jewish History Museum

Monday, October 7

4:00 PM Dance Fitness

Tuesday, October 8

Kol Nidre - All offices close at 2:00 PM

8:00 PM Kol Nidre Service

Wednesday, October 9

Yom Kippur - All Offices Closed

8:30 AM Yom Kippur Early Morning Service followed by Parallel Discussions

8:30 AM Parallel Programs for Grades K - 5

9:45 AM Yom Kippur Kol Haneshamah Service at FCC

10:00 AM Yom Kippur Kulanu Service at Wilson School

11:30 AM Yom Kippur Late Morning Service followed by Parallel Discussions

2:00 PM Yom Kippur Tiny Tot Service

3:15 PM Afternoon, Yizkor and Neilah Services

Thursday, October 10

7:00 PM Adult B'nai Mitzvah Class

Friday, October 11

7:45 PM Erev Shabbat Service

Saturday, October 12

8:15 AM Holy Scrollers Torah Study

9:00 AM Simchat Shabbat

9:30 AM Saturday Morning Minyan followed by Light Brunch & Discussion

Sunday, October 13

Erev Sukkot

8:00 AM Men's Club Sukkah Construction

11:00 AM Sisterhood Decorating the Sukkah

7:00 PM Erev Sukkot Service with the Kirtan Rabbi

Monday, October 14

Sukkot - All Offices Closed

10:00 AM Sukkot Morning Service followed by Kiddush

Tuesday, October 15

9:30 AM Bible Class

Friday, October 18

6:00 PM Shabbat B'yachad

7:45 PM Zimrat Shabbat Service

Saturday, October 19

8:15 AM Holy Scrollers Torah Study

9:30 AM Connie Reiter's Torah Study

9:30 AM Tiny Tot Service

9:30 AM Saturday Morning Minyan followed by Light Brunch and Discussion

10:00 AM Saturday Morning Fun Club

Sunday, October 20

Simchat Torah/Shemini Atzereth

5:45 PM Simchat Torah Celebration

7:00 PM Simchat Torah Service

Monday, October 21

Sh'mini Atzeret - All Offices Closed

10:00 AM Shmini Atzereth with Yizkor

Tuesday, October 22

9:30 AM Bible Class

Wednesday, October 23

7:00 PM Mixed Media Mishpucha

7:30 PM Sisterhood Meeting

7:30 PM Tikkun Olam/Social Action Committee Meeting

Friday, October 25

5:00 PM Pre-Oneg

6:00 PM Erev Shabbat Service

Saturday, October 26

8:15 AM Holy Scrollers Torah Study

9:00 AM Simchat Shabbat

9:30 AM Saturday Morning Minyan followed by Light Brunch and Discussion

10:00 AM Saturday Morning Fun Club

Monday, October 28

11:30 AM Lunch and Learn with Rabbi Kroloff

4:00 PM Dance fitness

Tuesday, October 29

9:30 AM Bible Class

Wednesday, October 30

7:00 PM Mixed Media Mishpucha

Donations to Temple Funds - Thank You To Our Generous Donors!

Donations made through July 29, 2019. Please look for later contributions in the September/October issue. To make a donation, please contact the Temple office at 908-232-6770 x 120.

EDUCATION

Solomon J. Buchsbaum Fund

Phyllis Buchsbaum
In honor of the birth of Anne Barras' great granddaughter, Ava

Kabakow Fund

Wendy & Glenn Tucker
In honor of the marriage of Matthew Sanders to Colleen Marie Caty

Lifelong Learning Fund

Lauren & David Roth
In honor of Hillary & Brian Kaplan's Birthdays
Cheryl & Jim Frost
In memory of Allen Gold, father of Dr. Jeffrey Gold
Peg & Stan Biner
In honor of a speedy recovery for Debbie Linder
Marilyn Lieberman & Ed Learner
In honor of the birth of Alexandra Charlotte, granddaughter of Deena & Lew Ochs

The Holly E. Wetscher Ma'ayan Education Fund

Roz & Dave Dorlen
In memory of Dr. Stephanie Coyne's brother, Anthony
In memory of Ellen Goldman's husband, Joseph
In memory of Laura D'Anna's mother
In honor of the birth of Marigold Ann, granddaughter of Laurie & Saul Heitner

Religious School Fund

Brett, Alicia & Cooper Harris
In appreciation of Abra Lee
In honor of the graduating seniors

Rabbi Charles A. Kroloff Fund for Jewish Learning

Lucille Rosenberg
Mazel Tov on Terry's Bat Mitzvah
Pamela Bernstein
In appreciation
Maralyn Lieberman and Ed Lerner
In honor of Naomi Waller's Bat Mitzvah
Helene and Marvin Gersten
In honor of the Bar Mitzvah of Gene and Carol Rosner's grandson
In honor of Terry Kroloff's Bat Mitzvah
Tanya and Don Whellan
In honor of Granddaughter Rachel Mack's marriage to Joshua Kolsky
Sue Shusman
In honor of the Marriage of Matthew Sanders to Colleen Caty
Roni and Marc Epstein
In honor of Dr. Terry Kroloff becoming a Bat Mitzvah
Carolyn Weil
In memory of Peter Weil

GENERAL TEMPLE EMANU-EL FUNDS

Terror Victims Fund

Jill Stier
In memory of Allen Gold, father of Dr. Jeffrey Gold

Temple Fund

The Glicksteins
In memory of Joyce Scher, mother of Jill Kaufman
Edward Neufeld
In appreciation
Selma & Jerry Krevans
In memory of Verna Lemberg, mother of Bruce Lemberg

DISCRETIONARY FUNDS

Rabbi Prosnit's Discretionary Fund

Confirmation Class 2019
Many Thanks to Rabbi Prosnit
Seth Pompan
Jonathan Pompan
In memory of Nanci Pompan
Brett, Alicia & Cooper Harris
In appreciation of Rabbi Prosnit
In honor of the Confirmation Class

Cantor Novick's Discretionary Fund

Jill Stier & Family
In memory of Helen Forman, mother of Dr. Jerome Forman
Gerstman Family
In memory of Karen Levine
Gail & Rich Kelner
In memory of Verna Lemberg, mother of Bruce Lemberg
Mara & Scott Zilberberg
In appreciation of Kait's Conversion
Jeanne & Mark Shottland
In memory of Robert Godfrey, father of Pam Raiff
The Harris Family
In memory of Arlene Harris

Cantor Rubel's Discretionary Fund

Lisa & David Bleich
In memory of Richard Lickhalter, father of Lisa Bleich
Brett, Alicia & Cooper Harris
In honor of the marriage of Cantor Rubel to Michael Cordover

SOCIAL ACTION

Caring Community

Amy & David Nathanson
In memory of Helen Forman, mother of Dr. Jerome Forman
Roni & Marc Epstein
In appreciation of the Caring Community for their kindness on all occasions & lifecycles
Sylvia & Howard Cohen
In honor of the birth of Alexandra Charlotte, granddaughter of Deena & Lew Ochs

Harris & Sally Gilbert Fund

Lucille Rosenberg
In honor of Rabbi Hilly Haber's Ordination

Mandy Reichman Fund

Marci & Michael Schoenbach
In honor of Matthew Sanders & Colleen Marie Caty's marriage
Carol Cohen
In memory of Barbara Perlin, mother of Ben Perlin
Dr. Nicholas & Denise Yatrakis
Mr. & Mrs. Stuart Reichman
In memory of Mandy

The Mandy Reichman Feeding Program has been generously supported during these months by:

Rea & Myron Kolski
Joanne & Stephen Bernstein
Sandra & Jack Cohen

Nanci Pompan Fund for Women's Empowerment

Andi & Howard Wiener
In honor of the birth of Alexandra Charlotte, granddaughter of Deena & Lew Ochs

Refugee Fund

Marcy, Michael, Nate & Madeline Lechner
In memory of Elliott Tananbaum, father of Allen
Tananbaum

Fritz and Edith Lehr Library Fund

Brett Harris
In memory of Herb Ehrich

MUSIC

Laura Holland Music Shabbat Fund

Lynn & Hal Aronson
In memory of Betty Barnett, mother of Ruth Kaye

The Rose and Fred Music Fund

Barbara & Jerry Crown
In honor of Rachel Ackerman's marriage to Jake

Shabbat Hallelu/Simchat Shabbat Fund in Memory of David Kopelman

Brett Harris
In honor of Terry Kroloff's Bat Mitzvah
Brett, Alicia, Cooper Harris
In honor of Ben Bass' graduation and making aliyah
In honor of Sophie Bass' graduation
In honor of Debbie Blum's son Sam's marriage

YOUTH PROGRAMS

Jyl Skolnick Scholarship Fund

Nicole & Steve Frankel
In memory of Kenneth Plattman, father of Stephen
Plattman

The Jeff and Eleanor Peris Camp Scholarship Fund

Eleanor & Jeff Peris
In memory of Aaron Levinson
In memory of Sonia Levinson
Peg & Stan Biner
In honor of Dory & Ross Baron

Emily Wolin Memorial Fund

Sue & Mark Eveland
Arlene & Andy Brafman
Maxine Judd
Charles Azen
Majorie Warren
James Shrager
Nancy & Warren Siegel
Debra & Robert Goodman
Abby & Edward Bond
Judy & Ken Peskin
Connie & Bernie Breslin
In honor of Jane Wolin's special Birthday

We thank the following families for their generous donations to the Religious School:

Melanie & Todd Arky, Dina & Aron Barsky, Lena & Andrew Borak, Lisa & Evan Borak, Kim & Steve Cagle, Debra & Michael Carberry, Soraya & Eric Chafetz, Mike & Kelly Cohen, Nicole & Alan Damashek, Dara & Neil Beckerman, Susan & Steve Diamond, Janet Epp-Rosenthal & Matthew Rosenthal, Shari Erasmus & Brian Bauman, Elyse & Scott Everett, Revital Faro & Brian Siegel, Patricia & Nuno Ferreira, Laura Forman & Jason Dymbort, Jennifer Gillman & Andrew Kofsky, Karen & Alan Gingold, Dina & Sidney Glasofer, Risa & Andrew Glenn, Jennifer & Stephen Goldstein, Lori & Joshua Gould, Wendy & Jon Greenwood, Michelle & Doug Haar, Deborah & Dan Hoffman, Robyn & Daniel Ives, Meredith Jacobs & Gary Buchalter, Risa & Jared Kaban, Stacey & Jack Kaufman, Kelly & David Hantman, Stefani & Lee Klaskow, Cheryl & Ben Lentzner, Sara Lubitz & Scott Wancier, Nikki & Ari Maizel, Andrea & Joshua Marcus, Eugenie & Roman Mordkovich, Sari & Jonathan Peris, Arianne & Ian Pinchuk, Venessa & Scott Rittman, Barbara Gross & Steven Rodkin, Amy & Michael Rollins, Deb Rothman & Alex Birch, Jill & Gil Sacher, Cheryl & Ian Schafer, Joanne & Joshua Schlitzer, Natalie & Yan Schwartzman, Lisa Seliger & Jeremy Keenan, Farah & Ken Shapiro, Rachel & Roak Stahler, Tally Faro & Brian Siegel, Ellen & Russell Tepper, Rochelle & Chad Wagenheim, Beth & Corey Weiner, Jenn & Scott White, and Danielle & Robert Wiesen

Professional Directory Listing ~
Please support our advertisers since they support us!

Accountant - CPA

Comprehensive Ongoing Services

Gary L. Russikoff, CPA

(973) 564-8080, Springfield

gary@russikoffllc.com

www.russikoffllc.com

Audiologist

Hearing Aid Dispensing

Meredith Rothenberg, Au.D.

The Hearing Center

(732) 574-3550, Clark

drmerthenberg@thcaudiology.com

www.thcaudiology.com

Dentist

Family & Cosmetic Surgery

Westfield Dental Associates, P.A.

Jack C. Elbaum, D.D.S.

Chantal Scott Alpizar, D.M.D.

(908) 232-4400, Westfield

frontdesk@westfielddentalassociates.com

www.westfielddentalassociates.com

Geriatric Care Management

Aging Life Care Professional ®

Elyse Weber-Sacks, LSW, CMC

(973) 984-3707

Westfield, Morris Plains, Northern NJ

ewebersacks@rcaremgmnt.com

www.ConnieRosenbergCareManagement.com

Dr. Thomas M. Burns, D.M.D., P.A.

(908) 789-8858, Westfield

westfieldbraces@gmail.com

www.westfieldbraces.com

Broker Sales Associate ABR, ASP, CNRS

Coldwell Banker Residential Brokerage

Sherrie Natko

600 North Avenue W., Westfield NJ

07090

cell (908) 303-8133 office (908) 233-0065

Westfield, Union, Essex & Somerset

Counties

sherrie.natko@cbmoves.com

www.hometeamsherrie.com

Veterinarian

Small Animals and Exotics

Dr. Robert Markowitz

(908) 276-1661, Kenilworth

Boulevardvet429@gmail.com

www.boulevardveterinaryclinic.com

Westfield Pediatric Dental Group

**LASER
DENTISTRY**

In Office IV and General Anesthesia

*Dentistry for Infants, Children,
Adolescents and Special Needs*



Visit our
web site

TIMOTHY P. McCABE, D.M.D., Board Certified

JULIE JONG, D.M.D., Board Certified

JOHN CHANG, D.D.S., Board Certified

KELLY WALK, D.D.S., Board Certified

SARA KARLIN, D.D.S., Board Eligible



908-232-1231

kidsandsmile.com • 555 Westfield Avenue • Westfield, NJ 07090



**TRAIN
PRODUCTIONS**

Creative Event Videography

- Bar/Bat Mitzvah
- Wedding
- Photo/Video Montage
- Musical Performance
- Sports
- Large Screen Projection
- Live Event Streaming

Artistry • Creativity • Integrity

The exclusive videographer of Temple Emanu-El B'nai Mitzvah services

908-233-1784

www.etrainproductions.com

Yesterday.



Herbert Ross
Founder

Today.



Karen Ross Kerstein
Manager

Tomorrow.



Our future is coming

At Menorah Chapels, we've been serving the Jewish community for over forty years... and we will continue to serve with honesty, integrity and dignity for many years to come. We are the only strictly Jewish funeral home in Union County that maintains its own building and are not affiliated with any other funeral home.

We were here for you yesterday... we are here for you today, and we will be here for you tomorrow.



Menorah Chapels at Millburn

2950 Vauxhall Road, Union, NJ 07088 908-964-1500

Karen Ross Kerstein, Manager, NJ Lic. No. JP03663

Rudolph H. Kindel, President, NJ Lic. No. JP03158

Established 1975
Independently Owned
Handicap Accessible

Worldwide Arrangements New York · Florida · California · Israel
Out of State: 1-800-437-5151

www.menorahchapelsatmillburn.com



...We Truly

Care

Not affiliated
with any other
funeral home

Westfield Hearing Aid Center

940 South Ave West
Westfield, NJ 07090

Erich H. Golden, NJ Lic#727

(908) 233-0939

www.westfieldhearingaidcenter.com

Hearing instruments help many people hear better, but cannot solve every hearing problem or restore normal hearing. Copyright © 2016 Signia GmbH. All rights reserved. Signia, Inc. is a Trademark Licensee of Siemens AG. 9/16 D-7443



Accredited by the National Institute for Jewish Hospice and CHAP (Community Health Accreditation Partner)

354 DeMott Lane
Somerset, NJ 08873

STEIN HOSPICE

at The Oscar and Ella Wilf Campus for Senior Living

732-227-1212
www.WilfCampus.org



There's something
about this place!

www.jccnj.org



NJ Specialty Permit #3299

Pediatric & Adult Orthodontics

525 Westfield Avenue • Westfield, NJ 07090 • (908) 789-8858
www.westfieldbraces.com

PUT YOUR FAITH IN US



DESIGN & CONSTRUCTION LLC
REDCOMLLC.COM | (908) 233-4030



OFFICE HOURS
BY APPOINTMENT

David M. Fuerst, D.V.M.
Robert J. Markowitz, V.M.D.
Lauren Abdelmessih, D.V.M.

908-276-1661
Fax 908-276-7131
429 Boulevard
Kenilworth, NJ 07033

Interested in seeing
your ad here?

Contact Jackie Master about
Advertising in the Temple
Emanu-El bi-monthly Bulletin.

908-232-6770 x 133 or
jmaster@tewnj.org

Looking for New Insurance?

As the insurer of
Temple Emanu-El we
welcome you to
contact our office for
all of your insurance
needs

Services we offer-

- Homeowners Insurance
- Condominium Insurance
- Renters Insurance
- Automobile Insurance
- Flood Insurance
- Umbrella Insurance
- Life/Health Insurance
- Business Insurance

Felsen Insurance Services, Inc.
3155 Route 10 Suite 103
Denville, NJ 07834



Visit us on the web at
www.felsen.com

Tel: 1-800-2-TEMPLE



ORTHOPEDIC MEDICINE CENTER

REHABILITATION AND RECOVERY ARE AT THE CORE OF EVERYTHING WE DO.

Allan D. Tiedrich, M.D., P.A.

F.A.A.P.M. & R.

Board Certified Physical Medicine and Rehabilitation
NJ State Certified Medical Marijuana Physician

Conditions Treated

TRAUMA AND INJURY | SPORTS INJURY | CONDITIONS OF AGING

Special Services

**DISABILITY AND LEGAL ISSUES | MEDICAL MARIJUANA PHYSICIAN
DRUG ADDICTION TREATMENT**

Tel 908.769.7999 | Fax 908.769.5816

info@doctortomc.com | www.doctortomc.com
info@doctor-thc.com | www.doctor-thc.com

1304 South Avenue, Suite 4
Plainfield, NJ 07062

11 Monroe Street
Bridgewater, NJ 08807



 Temple **אמנו-אל**

 Emanu-El of Westfield

 756 East Broad Street

 Westfield, NJ 07090

Non-Profit Org.
 U.S. Postage
 PAID
 Rahway, N.J.
 Permit No. 620



www.sschwartzmusic@aol.com Stanley Schwartz Music 908 416-4655

custom invitations • all at a discount!



mitzvah • wedding
 envelope addressing
 personalized service
 25 years experience

908.232.5051 • karensanders@yahoo.com



Choosing the Right Realtor Makes a Difference

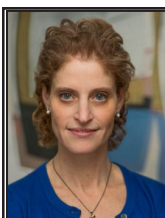
- ▲ Partners for success with home buyers & sellers
- ▲ Demonstrates powerful negotiation skills
- ▲ Provides expert service before, during & after the closing

Call Irene Today...It's the Best Move You'll Make!

c: 908-419-6982 ▲ e: irenekatz@aol.com

▲ www.irenekatz.com ▲

209 Central Avenue, Westfield, NJ 07090 ▲ o: 908-233-5555 x228



Shari Holtzman

MBA, Realtor Associate
 NJAR Circle of Excellence
 2009-2017

Coldwell Banker Residential Brokerage
 209 Central Avenue, Westfield, NJ 07090
 Office: 908-233-5555 x210 Direct: 908-868-6299
shari.holtzman@cbmoves.com
 visit: www.makeNJhome.com




Sherrie Natko

Broker Sales Associate, ABR, ASP, SRES
GLOBAL LUXURY SPECIALIST
 NJ REALTORS Circle of Excellence 2007-2017
 FIVE STAR REAL ESTATE PROFESSIONAL - NJ Monthly Magazine
 Coldwell Banker Residential Brokerage - Westfield "West" Office
 600 North Avenue West, Westfield, NJ 07090
 Office: 908-233-0065
 Cell: 908-303-8133
sherrie.natko@cbmoves.com
www.HomeTeamSherrie.com



* invisalign * invisalign.com * 


GerschOrthodontics
 Advanced Cosmetic **SMILES** for Children & Adults

NJ Top Orthodontists and NJ Top Kids Docs

547 East Broad St. 401 North Wood Ave. 118 North Ave West
 Westfield, NJ 07090* Linden, NJ 07036 Cranford, NJ 07016

Please call for your Complimentary Evaluation, Xray & Consultation (a \$350 value)
 Most insurances accepted • Interest free financing
(908) 233-8668

www.GerschOrtho.com
 * Across from the Westfield Library *