

Shabbat Services:

Friday, November 1

Teeny Tot Shabbat.....5:30 PM
Shabbat Hallelu.....7:45 PM

Saturday, November 2 *Noach*

Saturday Morning Minyan.....9:30 AM

Friday, November 8

Erev Shabbat Service with Choir and
Special Guest Rabbi Gilad Kariv.....7:45 PM

Saturday, November 9 *Lech L'cha*

Simchat Shabbat.....9:00 AM
Saturday Morning Minyan.....9:30 AM

Friday, November 15

Shabbat B'yachad.....6:00 PM
Zimrat Shabbat.....7:45 PM

Saturday, November 16 *Vayeira*

Tiny Tot Shabbat.....9:30 AM
Saturday Morning Minyan.....9:30 AM

Friday, November 22

Pre-Oneg.....5:00 PM
Erev Shabbat Service.....6:00 PM

Saturday, November 23 *Chayei Sarah*

Simchat Shabbat.....9:00 AM
Saturday Morning Minyan.....9:30 AM

Friday, November 29

Pre-Oneg.....5:00 PM
Erev Shabbat Service.....6:00 PM

Saturday, November 30 *Tol'dot*

Saturday Morning Minyan.....9:30 AM

Friday, December 6

Shabbat Hallelu.....7:45 PM

Saturday, December 7 *Vayetzel*

Tiny Tot Shabbat.....9:30 AM
Saturday Morning Minyan.....9:30 AM

Friday, December 13

Erev Shabbat Service with Choir.....7:45 PM

Saturday, December 14 *Vayishlach*

Simchat Shabbat.....9:00 AM
Saturday Morning Minyan.....9:30 AM

Friday, December 20

Shabbat B'yachad.....6:00 PM
Zimrat Shabbat Service.....7:45 PM

Saturday, December 21 *Vayeishev*

Saturday Morning Minyan.....9:30 AM

Friday, December 27

Pre-Oneg.....5:00 PM
Erev Shabbat Service/Hanukkah
Shabbat.....6:00 PM

Saturday, December 28 *Mikeitz*

Simchat Shabbat.....9:00 AM
Saturday Morning Minyan.....9:30 AM

Minyan Services

Monday-Thursday.....7:00 PM
Upon request. Call Laurie Zinberg: 908-232-6770 x 117

Divrei Halev - Words from the Heart

What is a synagogue?

Recently, a friend of mine who is not Jewish asked me this question. He told me that Jews had temples and shules and that they are "like churches." But he wasn't familiar with "synagogue." "Is synagogue some other Jewish place, like a JCC or a Jewish hospital or Jewish Family Service or Jewish Federation?" "No," I responded. "Synagogue" is actually a Greek word meaning a place of assembly." He was puzzled by my answer.

So, I expanded on the answer. I told him that a classic synagogue (typical synagogue) is a Beit Keneset, a House of Assembly, a Beit Tefilah, a House of Prayer, and a Beit Midrash (A House of Study). All three combined into one. In other words, the synagogue is the institution in Jewish life where Jews gather to share in all matters of life (sacred and not so sacred); where Jews come to pray (our liturgical prayer service is based on the rite of worship as carried out in the ancient Temple in Jerusalem, except that we no longer have sacrifices; instead, we recite and sing prayers and psalms and songs); and it is the place where we engage in the study of our sacred texts to learn about the meaning of life, along with inculcating our children in our People's story, our forms of celebration, and our People's sacred and global and modern language, Hebrew.

He said to me, "I had no idea!" Truth be told, most people don't really know what goes on in the synagogue, a good synagogue, a special synagogue.

Permit me to share with you how I see it:

A synagogue is a place where Jews (individuals and families) gather to be part of community. No one lives alone. Without community we usually die, at least a death of our spirit. In community, we are embraced when in pain, we are lifted up when we rejoice, we are cajoled and encouraged to engage in activities that transform our lives and the lives of others.

Continued on Page 2

In this issue...

Celebrate Shabbat.....2	Congregational Learning.....10 - 11
B'Mishpachach.....3	Tikkun Olam.....12
Hanukkah.....7	Our Temple Community.....13
Education.....8 - 9	Donations to Temple Funds.....15 - 17

Celebrate Shabbat

TEMPLE EMANU-EL Bulletin

756 East Broad Street, Westfield, NJ 07090

(908) 232-6770 Fax (908) 233-3959

www.tewnj.org

Bennett F. Miller..... Interim Senior Rabbi
Ethan Prosnit..... Rabbi
Charles A. Kroloff..... Rabbi Emeritus
Martha T. Novick..... Cantor
Michelle Rubel..... Associate Cantor
Becky Jaye..... Rabbinic Intern
Brian Chartock..... Executive Director
Abra Lee..... Director of Youth Learning & Engagement
Jill Cimafonte..... Director of Early Childhood Education
Nicholas Tino..... Organist/Choir Director
Marc Epstein..... President
John Levy..... Vice President, President Elect
Peter Carlin..... Vice President, Administration &
Strategic Planning
Ellen Staple Vice President, Communication
and Membership
Jenn White.... Vice President, Education & Youth Dev.
Robert Kurtter..... Vice President, Financial Matters
(Treasurer)
Alayne Morgenthal..... Vice President, Social Action &
Religious Living
Carol Cohen..... Parliamentarian
Samuel Harrison..... Financial Secretary
Cheryl Marks Young..... Assistant Treasurer/Budget
Coordinator
Jennifer Goldstein..... Recording Secretary
Michelle Beck..... Corresponding Secretary
Riva Waller..... Sisterhood President
Mark Kabakow..... Men's Club President
Aidan Berman & Dylan Berger..... TEWTY
Co-Presidents
Jackie Grussgott..... Communications & Membership Mgr.
Jackie Master..... Bulletin Advertising

Affiliated with the Union for Reform Judaism

The Temple Emanu-El Bulletin is published by

TEMPLE EMANU-EL

756 East Broad Street

Westfield, New Jersey 07090

There is no subscription charge.

Divrei Halev - Words from the Heart

Continued from Page 1

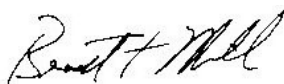
A synagogue is a place where our souls are encouraged to soar, where the beating of our hearts can be heard and felt, where we can be comforted and moved by the songs of our people, by the ancient and modern words of our poets and writers, all of whom tell the story of the Jewish People in their own way. And our story is the most incredible narrative of a people and its encounter with the Divine over the course of the last four thousand years, wherever we have lived and thrived and contributed to society, in the Land of Israel and throughout the world.

A synagogue is a place that is safe. It is where children, from infants and toddlers to high school graduates can walk into the building and learn and grow and play, knowing that they are protected and guided by loving parents, rabbis, cantors, teachers, Jewish leaders. There are few places like this in the world any more, but the synagogue is still such a place. I pray that it will always be so.

A synagogue is one of the pillars of the community in which we live. From the synagogue we reach out to our neighbors and participate with them in honoring all that is good and kind and noble in our community. And a synagogue is a beacon of light that shines forth, welcoming all who are in need, and providing guidance and assistance to all who yearn for companionship and love.

Yes, a synagogue is all of this, and more. It is the place where God's presence should be felt from the moment you walk through the door to the moment you return to your home.

A synagogue is a place where our lives are transformed each and every day. I can't imagine what Jewish life would be like without a strong and vibrant synagogue in my life. I trust and hope the same is true for you.



Rabbi Bennett F. Miller

Simchat Shabbat

Saturdays, November 9 & 23 and December 14 & 28 at 9:00 AM

Simchat Shabbat is an intimate, informal, intergenerational service with guitar music, fellowship, and bagels. Come experience the joy of Simchat Shabbat Services from 9:00-10:15 AM, followed by bagels and coffee.

B'Mishpachach במשפחה Within the Family

B'nai Mitzvah

The congregation will celebrate the following b'nai mitzvah:



November 2
10:30 AM in the Sanctuary
Benjamin Epstein
Son of Suzanne and Seth Epstein



November 9
10:30 AM in the Sanctuary
Joshua Greenwood
Son of Wendy and Jon Greenwood



November 16
10:30 AM in the Sanctuary
Joshua Singer
Son of Melanie and Jeffrey Singer



November 16
10:30 AM in the Sanctuary
Jack Singer
Son of Melanie and Jeffrey Singer



November 16
10:45 AM in the Chapel
Layne Levine
Daughter of Laurie and Andrew Levine



November 23
4:30 PM in the Chapel
Kayla Halegoua
Daughter of Melissa Schwartzman



November 30
4:30 PM in the Sanctuary
Samantha Rever
Daughter of Kara and Ryan Rever



December 7
10:30 AM in the Sanctuary
Jordan Hadel
Daughter of Tracy and Dan Hadel



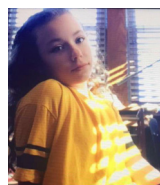
December 7
10:30 AM in the Sanctuary
Jared Whelan
Son of Stefanie and Daniel Whelan



December 7
5:00 PM in the Sanctuary
Olivia Kanterman
Daughter of Debbie and Jeremy Kanterman



December 14
10:30 AM in the Sanctuary
Evan Bauer
Son of Deborah Landau and Andrew Bauer



December 14
10:30 AM in the Sanctuary
Leah Gelfand
Daughter of Marli and Jonathan Gelfand



December 21
10:30 AM in the Sanctuary
Amanda Williams
Daughter of Stephanie and Dan Williams



December 30
Adam Eisdorfer
Son of Barbara Schwarz-Eisdorfer and Jerry Eisdorfer

In Memoriam

We remember those from our Temple family:

Rhoda Epstein

Wife of Stanley Epstein

Herb Goldstein

Father of Stephen Goldstein

We remember those from our extended Temple family:

Robert Katz

Father of Judy Hoffman

Selma Goldenberg

Sister of Harriet Schulman

Robert Saltzstein

Father of Steven Saltzstein

Gloria Fox

Mother of Barbara Bregman and Gary Fox

Eleanor Bouer

Mother of Susan Sklar and

Grandmother of Amy Doll

Stephen Gottdiener

Father of Gary Gottdiener

Martin Rosenthal

Father of Don Rosenthal

Mark Shir

Father of Boris Shir

Irving Reiser

Father of Pamela Rediker

Congratulations

Adam and John Blumenreich

on the birth of their daughter, Ilana Vivienne Blumenreich

Cathy and Paul Schackman on the birth of their granddaughter, Edith Pearl Fayer

Martha Novick on the birth of her grandson, Liam Gutkin, son of Abby and Tara Gutkin

Terri and Rick Klass on the marriage of their daughter Sarah to Emmet Markin

Diane and Jerry Forman on the birth of a granddaughter, Scarlett Helena Forman, son of Daniel and Jenna Forman

**Special Erev Shabbat Guest
Rabbi Gilad Kariv**

**Friday, November 8 -
Service at 7:45 PM;
Dinner at 6:30 PM (by reservation)**



Join us as we welcome Rabbi Gilad Kariv as our special guest at Erev Shabbat Services on Friday, November 8.

Rabbi Kariv is the President and CEO of the Israel Movement for Reform and Progressive Judaism (IMPJ). Rabbi Kariv previously served as the Associate Director of the Israel Religious Action Center. He is a visionary, building an exciting Reform Judaism in Israel.

Rabbi Kariv served in the Israeli Defense Forces' special Talpiot project of the Intelligence Corps. He graduated from the Faculty of Law at the Hebrew University, earning a combined degree with a BA in Law and Jewish Philosophy.

In 2012 and 2015, Rabbi Kariv ran for office in the primary elections under the Labor Party and more recently in the General Israeli elections. He came very close to being the first Reform Rabbi to serve in the Knesset.

Continued on page 6

WORLD ZIONIST ELECTIONS - VOTING IS COMING SOON!



The World Zionist Congress Elections will be happening soon, and your vote is critical to maintaining a large Reform presence in Israel and the United States.

The Reform Movement is counting on us to have every eligible person in our congregation vote. Each of you is asked to stand up for Israel and for our values. As a congregation, it is important for us to be leaders in our movement and build a future for Israel that the next generation will be proud of.

Your vote is the only democratic opportunity that we as American Jews have to influence Israeli society as we continue our efforts towards equality, pluralism, and tolerance. Voting takes place online starting January 21, 2020 to March, 2020 and will take less than 90 seconds to participate. If you're 18+ and identify as Jewish, you are eligible to vote, and we hope we can count on you to vote Reform.

Additional information will be sent out as we get closer to the voting period. To get more involved in our congregation's efforts, please contact Susan Dickstein at susand623@aol.com



Please support our Kol Nidre Appeal

Please support our Annual Kol Nidre Appeal this year by making as generous a gift as possible. No gift is too small.

When you make your Kol Nidre donation, it goes right to work! Your dollars turn into Temple Emanu-El programs and services. They help us maintain our building, fund our Religious School, create new worship experiences, and expand both our Adult Education programs and social action initiatives that benefit our entire community and beyond. Your Temple Emanu-El Kol Nidre gift also provides dues relief to families in need who want to belong to our community.

To participate in the Kol Nidre Appeal, please visit our website and fill out the form online OR contact the Temple office.

www.tewnj.org/kol-nidre



Planned Giving Opportunities

Bequests. Codicil. Residuum?

Those words aren't typos, they are real terms used in legacy giving. There's a lot of jargon out there surrounding charitable donations - let us help to demystify it!

Did you know that:

...a bequest is the most common planned gift, but there are other options as well? Some of those options are a charitable gift annuity, charitable remainder trust, or life insurance policies. Consider giving a gift to Temple Emanu-El that will live on through the years.

Contact Brian Chartock for more information or details on how Planned Giving can fit into your plans. We will try our best to answer all of your planned giving questions.

Create a Jewish Legacy

Remembering Temple Emanu-El in your will or estate plan ensures that your work and your values will continue when you are no longer here. It also serves as an example of ongoing kindness to your loved ones. It teaches them the value you've placed on supporting Temple Emanu-El and the Jewish community. Legacy giving is for everyone. Make the most meaningful gift you can. Every gift is important.

For more information on how you can create your Jewish Legacy, please contact Brian Chartock, our Executive Director, at 908-232-6770 x114.

Create a Jewish Legacy is part of a nationwide program to sustain the future of Jewish organizations by increasing after-life giving. It is sponsored locally by The Jewish Community Foundation of Greater MetroWest, in partnership with the Harold Grinspoon Foundation.

I am interested in learning more about how I can assure Jewish tomorrows through the Create a Jewish Legacy program at Temple Emanu-El. Please contact me!

The best time to reach me: _____

Best way to reach me: _____
(Phone/email address)

Sincerely, _____
(Please print your full name)



If you are 70 1/2 or older, you can still use your IRA for charitable contributions during your lifetime. Qualified Charitable Distributions (QCD) have distinct tax advantages. A QCD is not treated as taxable income; therefore, it has no effect on taxable income. This allows for greater amounts to be transferred to charities tax-free and can help the donor avoid the aforementioned negative financial consequences.

Did you know we have new stock transfer info?

Please contact Kathleen Stovall for instructions. kstovall@tewnj.org or 908-232-6770 x113.



One Congregation - One Book

Special Erev Shabbat Guest Rabbi Gilad Kariv

Continued from page 4

Rabbi Kariv led the negotiations on the Kotel issue together with leaders of the Conservative Movement, Reform Movement, JAFI, and JFNA, which resulted in a historic decision to create a pluralistic section of the wall that was later frozen and rescinded by the government of Israel.

Rabbi Kariv resides in Ramat Gan with his wife Noa and their three children.

Please join us for dinner at 6:30 PM preceding services. The cost is \$25 per adult and \$15 per child. RSVP Required for Dinner. Please RSVP online at www.tewnj.org/welcome-rabbi-gilad-kariv-to-shabbat-services or contact Carol Jassin at 908-232-6770. x120.

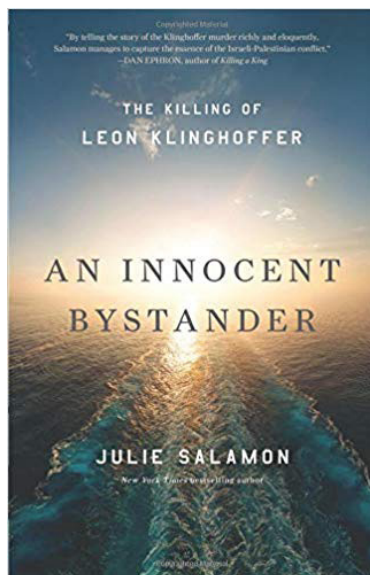
Lunch with Rabbi Ayala Samuels

November 12 at 11:30 AM

Rabbi Ayala Ronen Samuels is the founding Rabbi of a new Reform Congregation in Caesarea. Join her for lunch as you have the opportunity to ask any question about Israeli life, culture, and progressive Judaism. This is a great follow up from Rabbi Gilad Kariv's visit as we have the chance to continue the conversation. Please RSVP online or contact Carol Jassin at 908-232-6770. x120.

An Evening with Julie Salamon, Author of *An Innocent Bystander: The Killing of Leon Klinghoffer*

Thursday, November 14 at 7:30 PM



Join New York Times Best Selling Author, Julie Salamon, as she discusses her latest book, *An Innocent Bystander: The Killing of Leon Klinghoffer* with the Temple Emanu-El community. It is a night not to be missed!

*We encourage book clubs, individuals, and/or families to read *An Innocent Bystander* before the evening but even if you do not we hope you join us for this great event.

Please RSVP here:

www.tewnj.org/one-congregation-one-book



Liturgy Lunch and Learns with Rabbinic Intern Becky Jaye

November 8, 22 and December 13 at 12:00 PM

Take a journey through our rich Jewish Liturgy. Learn about the origin and transformation of our prayers and find your own connections and paths in our prayer book. Light Lunch will be served.

RSVP Here: www.tewnj.org/liturgy-lunch-and-learns

Ba-ruch a-ta, A-do-nai El-lo-hei-nu, me-lech ha-o-lam,
a-sheer ki-de-sha-nu be-mits-vo-tav,
ve-tsi-va-nu le-had-lik ner shel ha-nu-kkah.
Blessed is Adonai our God, Ruler of the Universe, who
hallows us with God's Mitzvot and commands us to kindle
the Hanukkah lights.

Ba-ruch a-ta, A-do-nai El-lo-hei-nu, me-lech ha-o-lam,
she-a-sa ni-sim la-a-vo-tei-nu ba-ya-mim
ha-heim ba-ze-man ha-zeh.

Blessed is Adonai our God, Ruler of the Universe, who
performed wondrous deeds for our ancestors in days of
yore at this season.

First Night Only: Ba-ruch a-ta, A-do-nai El-lo-hei-nu, me-
lech ha-o-lam, she-he-che-ya-nu,
ve-ki-ye-ma-nu ve-hi-gi-a-nu la-ze-man ha-zeh.
Blessed is Adonai our God, Ruler of the Universe, for
giving us life, for sustaining us, and for enabling us to
reach this season.

Blessing for the Shamash (recited each day). As one
candle may kindle many others, yet lose none of its own
light, so Judaism has kindled the light of truth for many
religions in many lands throughout the ages.

First Night. The first light, or candle, tells of God whose
first command was "Let there be light." The darkness of
idol worship was scattered when Israel brought radiant
knowledge of God. "I am the first, I am the last," says
Adonai.

Second Night. The second light is the light of the Torah.
Israel's Book of Law has brought learning and truth to all
of the Western World. "The commandment is a lamp and
the law is a light."

Third Night. The third light is the light of justice. No nation
can endure that which is unjust to the weak. "Justice,
justice shall you pursue" was the commandment of
Moses, our teacher.

Fourth Night. The fourth light is the light of mercy. Cruelty
hardens the heart and destroys friendships. "Do justly
and love mercy" was the teaching of Micah, the prophet.

Fifth Night. The fifth light is the light of holiness. Purity of
thought, ability of action, make all life sacred. From the
Prophet Isaiah these words have been taken into Israel's
prayer book, "Holy, holy, holy is the Lord of Hosts."

Sixth Night. The sixth light is the light of love. When
the love, which our parents give us, makes all our lives
beautiful, we learn to understand the Biblical words, "You
shall love Adonai, your God, with all your heart and soul
and might."

Seventh Night. The seventh light is the calm light
of patience. Nothing can be achieved in haste. The
spreading tree and the human soul grow slowly to
perfection. Thus says King David, "Trust in the Lord, wait
patiently for God."

Eighth Night. The eighth light is the light of courage. Let
truth and justice be your armor and fear not. Live by the
words Moses spoke to Joshua, "Be strong and of good
courage."

Happy Hanukkah!

We wish for you and your families a Hanukkah of special warmth and beauty.
May the glow of the hanukkiyah bring peace to our homes,
Israel, and throughout the world.



Sunday, December 8 at
10:45 AM

Last Hanukkah we
packed over 25,000

meals, and we are going to do it again this year! Join us
for the perfect Social Action program for the entire family.
Look out for more information and ways to RSVP for the
event soon!



Latke Recipe

Latkes, fried potato pancakes, commemorate the miracle associated with the oil that
burned for eight days in the Hanukkah story. Foods cooked in oil are traditionally
eaten during Hanukkah.

Ingredients

- 1 pound potatoes
- 1/2 cup finely chopped onion
- 1 large egg, lightly beaten
- 1/2 teaspoon salt
- 1/2 to 3/4 cup olive oil

Accompaniments: sour cream and
applesauce



Directions

Preheat oven to 250°F.

Peel potatoes and coarsely grate by hand,
transferring to a large bowl of cold water as
grated. Soak potatoes 1 to 2 minutes after
last batch is added to water, then drain well
in a colander.

Spread grated potatoes and onion on a
kitchen towel and roll up jelly-roll style. Twist
towel tightly to wring out as much liquid as
possible.

Transfer potato mixture to a bowl and stir in
egg and salt.

Heat 1/4 cup oil in a 12-inch nonstick skillet
over moderately high heat until hot but not
smoking.

Working in batches of 4 latkes, spoon 2
tablespoons potato mixture per latke into
skillet, spreading into 3-inch rounds with a fork.

Reduce heat to moderate and cook until
undersides are browned, about 5 minutes.

Turn latkes over and cook until undersides
are browned, about 5 minutes more. Transfer
to paper towels to drain and season with salt.

Add more oil to skillet as needed. Keep latkes
warm on a wire rack set in a shallow baking
pan in oven.

Serve with sour cream and apple sauce.

Education

The Temple Sholom Holocaust Remembrance Committee is pleased to host a Community-Wide Kristallnacht commemoration on Sunday, November 3, at 7 PM. The Czech Memorial Scrolls Project

On November 9-10, 1938, Nazi Germany launched a mass assault on Jewish communities in Germany, Austria and parts of Czechoslovakia. This was known as Kristallnacht. Over 1,000 Jewish synagogues and over 7,500 Jewish businesses were destroyed, and approximately 30,000 Jewish men were arrested and taken to concentration camps. Miraculously, during this event and over the course of the war, 1572 Czech Torahs were saved.

This program focuses on six of these Torahs, housed at: Congregation Beth Israel, Scotch Plains; Temple Beth O'r Beth Torah, Clark; Temple Beth El Mevor Chayim, Cranford; Temple Emanu-El, Westfield; Temple Sinai, Summit; Temple Sholom, Scotch Plains.

This program is presented through the generous support of the Rabbi Sydney Nathanson Fund. Please contact the Temple office if you may need accommodations to participate in this event.



1925 Lake Avenue
Scotch Plains, NJ 07076
908-889-4900
www.sholomnj.org

Early Childhood Education



Play is children's "work" in our ECE. These children are learning about shapes, size, textures, balancing, and cooperation with wooden loose parts.

Youth Group

**EXTREME YELADIM
(3RD - 4TH GRADE)
PRESENTS
FALAFEL MANIA**



**WHEN: SUNDAY, NOVEMBER 17, 2019
FROM 10:45AM TO 12:30PM
WHERE: TEMPLE EMANU-EL OF WESTFIELD
IN GREIFER SACKS LARGE
PRICE: \$25 FOR YG MEMBERS, \$30 FOR NOT YET YG MEMBERS. INCLUDES LUNCH AND A SPECIAL TREAT.
Pizza will be served for lunch!**

**If you have any questions or concerns
please email Kayla Zambrana at
kzambrana@tewnj.org.**

**EXTREME BONIM (5TH-6TH GRADE) PRESENTS:
MOVIE DAY**



**SUNDAY, DECEMBER 15, 2019
-MORE DETAILS TO COME-
ANY QUESTIONS OR CONCERNS PLEASE EMAIL KAYLA
ZAMBRANA AT [KZAMBRANA@TEWNJ.ORG](mailto:kzambrana@tewnj.org).**

Youth Learning and Engagement

Our Youth Learning and Engagement participants had a great fall! Here are a few highlights:



Nisayon, the 6th grade experience, began with a family Shabbat program at the Trailside Nature and Science Center in Watchung Reservation. Samantha explored the night theatre and “camped out” with some of her new friends.

On Sunday, September 22, seven of our wonderful 8th & 9th graders in our Mitzvah Corps kicked the year off at the Westfield Neighborhood Council.



They learned about the deep relationship Temple Emanu-El has had with WNC from its beginning from our temple member and WNC founder, Harold Cohen. The teens studied the many ways in which WNC impacts and serves the Westfield low-income community and the ways they will be engaging with WNC this year. Our teens ended the day by reorganizing,



cleaning, and beautifying WNC's Learning Lounge, which is used as a tutoring center and playroom for the Westfield community. We gratefully acknowledge temple member and vice president of the Westfield Neighborhood Council, Amy Kover, for reconnecting us with the WNC and for helping our YLE team to create a meaningful program for our Mitzvah Corps

participants and the members of our greater Westfield community.



Temple Member and our school Mercaz coordinator, Hannah Lieberman, reviewing Hebrew after a long summer break.



Madrichim, teen leaders, welcomed learners back at Opening Day.

TEWTY

Co-Presidents Dylan Berger and Aidan Berman, along with the rest of the TEWTY board, are beyond excited for what the school year has in store for TEWTY. The board consists of nine members who all help to contribute to the collaborative group dynamic. The board met on October 22 in the Lavy House to begin planning the year's events. TEWTY hopes to carry out many events for the year, or approximately one a month, ranging from Shul-Ins to community service events and casual hang outs. This past Rosh Hashanah, TEWTY helped to lead the Tashlich service at Mindowaskin Park. It was a great opportunity to reflect on the past year and made us excited for what is to come. Aaron Soloman, the new group advisor, has been an excellent role model for TEWTY thus far and everyone is thrilled to have him. Please stay tuned for information about upcoming events.

Save these dates for upcoming events or subscribe to the Youth Learning and Engagement calendar to upload and receive updates throughout the year.

November

Sunday, November 3

8:45-10:45 AM - K/1 Family Program: Kabbalat Shabbat

1:30-3:30 PM - Nisayon Event: Remembering the past, Looking to the Future

6:00-6:45 PM - Cafe Torah, Westfield Diner

November 5 - 10

No Classes, NJEA Teacher's Convention and Veteran's Day school closing

November 15 - 17

NFTY Fall Kallah

Sunday, November 17

10:00AM-1:00P M - 10th Grade Confirmation Bridges Run

11:00AM-12:00 PM - New Madrichim Seminar

11:00AM-2:00 PM - Extreme Yeladim Event

12:00-2:00 PM - TEWTY Event

6:00-7:00 PM - Cafe Torah, Westfield Diner

Saturday, November 23

9:00AM-12:00 PM - Nisayon Event: Winter Celebrations

November 25 - December 1

No Classes, Thanksgiving

December

Friday, December 6 - Sunday, December 8

Taste of NFTY-URJ Camp Harlam

Sunday, December 8

8:30 AM-12:30 PM - Sisterhood Hanukkah Sale

9:30-10:30 AM - 8th & 9th Grade Mitzvah Corps, Hanukkah Helping Hands

9:45-10:45 AM - YLE Parent Gatherings

6:00-7:00 PM - Cafe Torah, Westfield Diner

Sunday, December 15

8:30 AM-12:30 PM - Sisterhood Chanukah Sale

9:00 AM-1:00 PM - 10th Grade Confirmation Bridges Run

11:00 AM-2:00 PM - Extreme Bonim Youth Group Event

December 22 - January 2020

No Classes, Winter Recess

Congregational Learning

Something to celebrate? Remembering a loved one? Feeling grateful?

Making a contribution to a Temple Fund is a great way to honor a loved one's memory, acknowledge a special occasion, or express gratitude.

Please contact Carol Jassin at 908-232-6770 x 120 to make a donation.

To make your tribute online, or see a full list of available funds, please see our website:

www.tewnj.org/tributes

Do you need help with shiva?

Temple Emanu-El's Shiva Help Committee can provide hands-on assistance and support. Some of the services we offer include:

- Waiting at the mourners' house to accept deliveries while others are at the funeral.
- Setting up food and/or turning on the coffee pot before mourners return.
- Providing shiva resources, checklists and useful contact information.

We want to be there for you and your family. Please call or email to let us know how we can help.

Marci Fisher
Marcifisher601@gmail.com
908-230-7452

Leslie Dickstein
Ldickstein@verizon.net
908-596-0079



It's all about the story. The journey can be the most exciting part! What is your story? And where does it fit in relation to Judaism? This year, we hope to help you find a great understanding of your place in the Jewish story. Throughout the year, our congregational family will strive toward a deeper connection to our Judaism through the theme of Am'cha: Your People. Your place. Your story.

We invite you to join us to find YOUR place in the story.

Holy Scrollers Torah Study

Saturdays, 8:15 AM at the Lavy House

Every Shabbat this 50-minute discussion and study will focus on the Torah Portion of the week, Jewish ideas and values, and the task of living a life of meaning.

Tuesday Morning Bible Class

Tuesdays, 9:30 AM

How does the Torah fit in my story? Participants study Bible plus the latest events of concern to the Jewish people. Feel free to drop in - you are always welcome!

Oral History Training with Gail Meyers

Wednesday, November 13 at 12:00 PM

Create your own oral history to preserve your story. Gail Meyers was trained at Columbia University in Community Based Oral History. Attend an introductory session about the power of sharing your story and then participants will be invited to sign up for private sessions to record their own stories with Gail as the interviewer.

Connie Reiter's Torah Study

Saturdays, November 16 and December 21 at 9:30 AM

For over 20 years, this eclectic adult group has been studying various books from our tradition, starting with the Torah and progressing through various books from the rest of the Tanach. We continue that tradition this coming year, starting with Book of Psalms. Psalms are often quoted in our liturgy – in the Shabbat service, as well as in the readings from the High Holydays and other holidays. We read text in the Tanach as well as various Commentaries – all in English. Our study leader is Connie Reiter and discussions range far and wide.

Congregational Learning Continued

Lunch and Learn with Rabbi Kroloff

Monday, November 18 at 11:30 AM

Informal and lively! Discussion topics will include contemporary events, films of Jewish and general interest, spiritual issues, aging wisely, family concerns, the rabbi's "struggles," Israel, the American Jewish community, and recent developments in Jewish life. Donations to support this program are welcome. Kindly direct them to the Rabbi Charles A. Kroloff Fund for Jewish Learning.

Monday, November 18 at 11:30 AM - Our guest will be Rabbi Ayala Ronen Samuels, PhD, founding rabbi of the liberal synagogue in Caesarea, Israel. We will be discussing "What Keeps Israelis Up At Night — What Do They Hope For In The Morning?"

Cognitive Vitality with Elizabeth Miller

Thursday, November 21 at 12:00 PM

Join Elizabeth Miller, a health and wellness consultant, to learn strategies on how to age well, how to keep your mind active, and how to live your life to the fullest.

Pursuing Justice: Using Law to Confront Anti-semitism with Amy Spitalnick, Director of Integrity First for America.

Wednesday, December 4 at 7:30 PM

Amy Spitalnick is a Modern Day Nazi Hunter. She represents the Charlottesville residents injured at the August 2017 white nationalist rally and she will share the work of Integrity First for America's groundbreaking lawsuit against white supremacists, neo-Nazis, and affiliated hate groups. She will present on their new method of combating violence based on racism, sexism, and anti-semitism.

Be in the Moment: Introduction to Mindfulness and Meditation in a Jewish Context

Tuesdays, December 3, 10 and 17 at 7:30 PM

Rabbi Rex Perlmeter is offering a class for those who would like to begin to develop a mindfulness meditation practice and would appreciate a structured step-by-step approach. This class is an opportunity to pause in the midst of our hectic lives, to calm our bodies and minds and to shift from a mode of mind oriented toward "doing" to a more spacious mode of mind that rests in "being". Each session will be framed by a Jewish concept or teaching as we cultivate steadiness, compassion, self-acceptance and kindness. This class is appropriate for both beginners and those with some meditation experience. It will provide an inclusive and welcoming environment that is accessible to all. No meditation experience or Jewish knowledge is necessary. You are welcome just as you are.

Online Congregational Hanukkah Candle Lighting - Story, Song, and Blessings

Monday, December 23 at 5:30 PM

Celebrate Hanukkah with your Temple Emanu-El Community from the comfort of your home! Log-on your computer and light the Hanukkah candles as we sing songs and share stories. RSVP to receive the log-in.

Emergency Number

**Lifecycle Emergency Number:
908-301-6890.**

The best way to reach a clergy member in the event of an emergency is to call the Temple at 908-232-6770 and listen carefully to the instructions.

If you cannot reach anyone at the Temple during business hours, or if it is after hours, please call 908-301-6890. We hope this will allow for even greater assistance for you and your families during a time of life-changing situations.

We're Here For You

Your clergy are committed to providing attentive, compassionate, and excellent pastoral care. Please call us at 908-232-6770 to let us know of your needs, or to inform us of a pastoral or life cycle emergency. We ask that you avoid the use of e-mail to communicate pastoral or life cycle issues. E-mail cannot be relied upon to provide timely and appropriate responses.

Memorial Plaques

Plaques are placed in the sanctuary to memorialize a loved one. The light is lit on the anniversary of a loved one's death, and on Yom Kippur. Donation for a plaque is \$500. Please contact Carol Jassin at 908-232-6770 x 120 for more information.

For more information, and to sign up, please go to:
www.tewnj.org/congregational-learning

Social Action Text Alerts

We have created a text system to alert you to social action volunteer opportunities and action items in our Temple, local, and wider community. Please sign up so you will be quickly informed about these mitzvah opportunities. To sign up, text @teesa to 81010. We hope these text reminders will encourage you to be involved and have your voice heard.

Civil Rights Trip

April 16 - 19, 2020

"For we were once strangers in a strange land."

We are excited to announce Temple Emanu-El's Civil Rights Journey, April 16-19, 2020. Join fellow Temple Emanu-El Members for a meaningful trip to the South, with stops in Birmingham, Selma, and Montgomery. Learn on location about the Civil Rights Movement and the impact the Jewish community had on this important chapter of American history. Highlights will include: visits to the Rosa Parks Museum and the Civil Rights Institute, a Creative Shabbat Tefilah at the Edmund Pettus Bridge, and tours of Freedom Park and the 16th Street Baptist Church. Register by November 15 to save your spot.

www.tewnj.org/civil-rights

Blankets of Love

November 6 at 7:00 PM



Blankets of Love is comprised of Temple Emanu-El congregants who meet monthly at Temple to knit and crochet blankets to present to the campers at Camp Happy Times, a free one-week overnight camp for children who have or have had cancer. Each crafter supplies their own yarn and patterns and makes their own blankets in the patterns

and colors of their choice. Anyone not local enough to join us for our monthly gatherings is invited to make blankets in the comfort of their home and send them to be included on donation day. For more information about Blankets of Love or to donate any unused yarn, please contact: jane.berlant@gmail.com.

Our next two meetings will be on November 6 and December 4 at 7:00 PM.

How to Get Involved with Social Justice Activities at TEE

Join us for our Tikkun Olam/Social Action Meetings on November 13 & December 11 at 7:30 PM.

The committee usually meets the second Wednesday of every month to help us plan upcoming Social Action programs and create a vision for the future. Questions? Contact the Tikkun Olam Co-Chairs David Burk and Daniela Shebitz at tikkunolam@tewnj.org.

Sign Up to be a member of the Caring Community

Can you give a ride to a Temple member in need of transportation to services or to a doctor's appointment? Can you cook a meal for a homebound senior or a congregant going through a difficult illness? Can you deliver a challah to a congregant celebrating something good or going through a challenging time? Sign up for the Caring Community email list by contacting Pamela Clarke, pamelac Clarke@achievementfirst.org or Lynda Wald, Lynda.wald99@gmail.com.

Volunteer for one of the shifts at the Westfield Food Pantry on the 2nd or 4th Wednesday of each month (9:15 AM – 11:15 AM). To volunteer to sign up contact Alice Fertig, Asfertig@gmail.com.

Participate in our Saturday Morning Fun Club for Refugees, Mitzvah Garden, Blankets of Love, Mandy Reichman Feeding Program, or one of the other wonderful events we do at Temple Emanu-El. For more information about any of these programs, contact tikkunolam@tewnj.org.

Our Temple Community

Sisterhood Membership Appreciation Dinner



SISTERHOOD PRESENTS "A NIGHT OF MAGIC" AS WE WELCOME AND HONOR OUR SISTERHOOD MEMBERS. DINNER IS FREE FOR ALL PAID-UP MEMBERS. ENJOY A NIGHT OUT WITH FRIENDS - OLD AND NEW.

 **Sisterhood's Membership Appreciation Dinner**

ENTERTAINMENT: MIKE SPADE - STAND-UP COMEDY MAGICIAN & ILLUSIONIST

Monday, December 16 at 6:30 PM 

RSVP by Dec 4 to: SISTERHOOD@TEWNJ.ORG

Not a member yet? It's not too late. Send in your dues of \$45 made out to Sisterhood. Drop off or mail to the Temple office. For more information call Maralyn at: 732-595-5050.

Judaica/Hannukah Gift Shopping Tables: We will welcome your Mitzvah Membership donation. Don't forget your checkbook. Learn about your impact on the Temple & our support of Women of Reform Judaism : WRJ

Temple Emanu-EL
756 East Broad Street, Westfield NJ 07090

Men's Club/Sisterhood Chinese Food & Movie





SPONSORED BY MEN'S CLUB AND SISTERHOOD

A Good Time to Get Together!

Join us for a night of Chinese food, popcorn, beer and wine & amazing flicks as we celebrate the festival of lights!

DECEMBER 25 AT 5 PM
TICKETS ARE ONLY \$10 PER PERSON OR \$30 PER FAMILY

RSVP at:
www.tewnj.org/chinese-and-a-movie



TEMPLE EMANU-EL
756 EAST BROAD STREET, WESTFIELD NJ 07090

Library News....

Fall is in the air and the house feels just a little quieter. Why not stop by the Fritz Lehr Library and select a new book as you promised yourself you would as soon as it got a little cooler. Some interesting new reads:

- *Underground Fugue* by Margot Singer
- *The Origin of Sorrow* by Robert Mayer
- *The Wartime Sisters: A Novel* by Lynda Cohen Loigman
- *The Nazi Hunters: How a Team of Spies and Survivors Captured the World's Most Notorious Nazis* by Neal Bascomb

You can leave a message at 908-232-6770, ext. 131, or email us: Brett Harris: bharris@wilentz.com Janice Kessler:

128beans@comcast.net
Bettye Barcan: bgb43@verizon.net

Mostly Music

November 24 at 3:30 PM at Temple Emanu-El

Simos Papanas, Violin
Paul Neubauer, Viola
Keith Robinson, Cello
Timothy Cobb, Bass
Orion Weiss, Piano
Eirini Tornesaki, Vocalist

Schubert, Trout Quintet in A Major
Skalkottas, Duo for Violin and Viola
and three Folk Songs for Violin and Piano

Traditional Greek Music for chamber ensemble

For subscription and ticket information, please visit www.mostlymusic.org or call 908-789-8578

November/December 2019

For up to date information or changes visit www.tewnj.org/events

Please note that Bar/Bat Mitzvah dates are no longer listed on this calendar. See page 3 for this information.
In addition, the Early Childhood Education and Religious School calendar can be found on our website at www.tewnj.org.

Friday, November 1

5:30 PM TEEny Tot Shabbat
7:45 PM Shabbat Hallelu

Saturday, November 2

8:15 AM Holy Scrollers Torah Study
9:30 AM Saturday Morning Minyan followed by
Light Brunch and Discussion
10:00 AM Saturday Morning Fun Club

Monday, November 4

4:00 PM Dance Fitness

Tuesday, November 5

9:30 AM Bible Class
5:10 PM Mandy Reichman Feeding Program

Wednesday, November 6

7:00 PM Blankets of Love
7:00 PM Hebrew Ulpan

Friday, November 8

12:00 PM Lunch and Learn with Rabbinic Intern
Becky Jaye
7:45 PM Erev Shabbat Service with Choir and
Special Guest Rabbi Gilad Kariv

Saturday, November 9

8:15 AM Holy Scrollers Torah Study
9:00 AM Simchat Shabbat
9:30 AM Saturday Morning Minyan followed by
Light Brunch and Discussion

Monday, November 11

4:00 PM Dance Fitness

Tuesday, November 12

9:30 AM Bible Class
11:30 AM Lunch with Rabbi Ayala Samuels
5:10 PM Mandy Reichman Feeding Program

Wednesday, November 13

12:00 PM Lunch and Learn: Oral History Training
7:00 PM Hebrew Ulpan
7:30 PM Tikkun Olam/Social Action Committee
Meeting
7:30 PM Sisterhood Book Club

Thursday, November 14

7:00 PM Adult B'nai Mitzvah Class
7:30 PM An Evening with Author Julie Salamon

Friday, November 15

6:00 PM Shabbat B'yachad
7:45 PM Zimrat Shabbat Service

Saturday, November 16

8:15 AM Holy Scrollers Torah Study
9:30 AM Tiny Tot Shabbat
9:30 AM Connie Reiter's Torah Study
9:30 AM Saturday Morning Minyan followed by
Light Brunch and Discussion
10:00 AM Saturday Morning Fun Club

Monday, November 18

11:30 AM Lunch and Learn with Rabbi Kroloff
4:00 PM Dance Fitness

Tuesday, November 19

9:30 AM Bible Class
5:10 PM Mandy Reichman Feeding Program

Wednesday, November 20

7:00 PM Hebrew Ulpan

Thursday, November 21

12:00 PM Lunch and Learn: Cognitive Vitality
7:00 PM Men's Club Meeting
7:30 PM Sisterhood Meeting

Friday, November 22

12:00 PM Lunch and Learn with Rabbinic Intern
Becky Jaye
5:00 PM Pre-Oneg
6:00 PM Erev Shabbat Service

Saturday, November 23

8:15 AM Holy Scrollers Torah Study
9:00 AM Simchat Shabbat
9:30 AM Saturday Morning Minyan followed by
Light Brunch and Discussion
10:00 AM Saturday Morning Fun Club

Monday, November 25

4:00 PM Dance Fitness

Tuesday, November 26

9:30 AM Bible Class

Thursday, November 28

Thanksgiving - All Offices Closed

Friday, November 29

Thanksgiving Friday - All Offices Closed
5:00 PM Pre-Oneg
6:00 PM Erev Shabbat Service

Saturday, November 30

8:15 AM Holy Scrollers Torah Study
9:30 AM Saturday Morning Minyan followed by
Light Brunch and Discussion

Monday, December 2

4:00 PM Dance Fitness

Tuesday, December 3

9:30 AM Bible Class
11:00 AM Israel Lunch & Learn
5:10 PM Mandy Reichman Feeding Program
7:30 PM Jewish Meditation Class

Wednesday, December 4

7:00 PM Blankets of Love
7:00 PM Hebrew Ulpan
7:30 PM An Evening with Amy Spitalnick: CEO of
Integrity for America

Thursday, December 5

7:00 PM Adult B'nai Mitzvah Class

Friday, December 6

7:45 PM Shabbat Hallelu

Saturday, December 7

8:15 AM Holy Scrollers Torah Study
9:30 AM Tiny Tot Shabbat
9:30 AM Saturday Morning Minyan followed by
Light Brunch and Discussion
10:00 AM Saturday Morning Fun Club

Sunday, December 8

10:45 AM Hanukkah Social Justice Program

Monday, December 9

4:00 PM Dance Fitness

Tuesday, December 10

9:30 AM Bible Class
5:10 PM Mandy Reichman Feeding Program
7:30 PM Jewish Meditation Class

Wednesday, December 11

7:00 PM Hebrew Ulpan
7:30 PM Tikkun Olam/Social Action Committee
Meeting

Thursday, December 12

7:00 PM Men's Club Meeting

Friday, December 13

12:00 PM Lunch and Learn with Rabbinic Intern
Becky Jaye
7:45 PM Erev Shabbat Service with Choir

Saturday, December 14

8:15 AM Holy Scrollers Torah Study
9:00 AM Simchat Shabbat
9:30 AM Saturday Morning Minyan followed by
Light Brunch and Discussion
10:00 AM Saturday Morning Fun Club

Sunday, December 15

8:30 AM Hanukkah Judaica Shop Sale

Monday, December 16

4:00 PM Dance Fitness
6:30 PM Sisterhood General Meeting & Dinner

Tuesday, December 17

9:30 AM Bible Class
5:10 PM Mandy Reichman Feeding Program
7:30 PM Jewish Meditation Class

Thursday, December 19

7:00 PM Adult B'nai Mitzvah Class
7:30 PM Sisterhood Meeting

Friday, December 20

6:00 PM Shabbat B'yachad
7:45 PM Zimrat Shabbat Service

Saturday, December 21

8:15 AM Holy Scrollers Torah Study
9:30 AM Connie Reiter's Torah Study
9:30 AM Saturday Morning Minyan followed by
Light Brunch and Discussion

Sunday, December 22 - Sunday, December 29

Family Promise

Sunday, December 22

5:30 PM Lighting of the first Candle

Monday, December 23

4:00 PM Dance Fitness
5:30 PM Online Congregational Candle Lighting

Wednesday, December 25

Christmas Day -- Offices Closed
5:00 PM Men's Club/Sisterhood Event

Friday, December 27

5:00 PM Pre-Oneg
6:00 PM Erev Shabbat Service/Hanukkah Shabbat

Saturday, December 28

8:15 AM Holy Scrollers Torah Study
9:30 AM Simchat Shabbat
9:30 AM Saturday Morning Minyan followed by
Light Brunch and Discussion

Monday, December 30

4:00 PM Dance Fitness

Donations to Temple Funds - Thank You To Our Generous Donors!

Donations made through September 29, 2019. Please look for later contributions in the January/February issue. To make a donation, please contact the Temple office at 908-232-6770 x 120.

EDUCATION

Solomon J. Buchsbaum Fund

Elaine Weill
In memory of Rhoda, wife of Stanley Epstein
Phyllis Buchsbaum
In honor of Debra & Allan Wagner's 10th anniversary
In honor of Ruth Wirth's special birthday

Early Childhood Education Fund

Alayne & Steve Morgenthal
In honor of the engagement of Kristen Jassin to Jeff Gecker

Kabakow Fund

Susan & Dennis Dickstein
In honor of the engagement of Kristen Jassin to Jeff Gecker

Lifelong Learning Fund

Harriet & Harvey Davidson
In memory of Eli Fishman, father of Ron Fishman

Religious School Fund

Erica, Greg, Cassie & Jordana Solomon
In memory of Herb Goldstein, father of Stephen Goldstein

The Holly E. Wetscher Ma'ayan Education Fund

Roz & Dave Dorlen
In honor of the birth of Ilana Vivienne Blumenreich, daughter of Adam & John Blumenreich
In honor of the engagement of Kristen Jassin to Jeff Gecker
In memory of Selma Goldenberg, sister of Harriet Schulman
In memory of Dr. Charles Zadikon

Dr. Burton Cohen Memorial Scholarship Fund

Cheryl Cohen
In honor of the birth of Edith Pearl Fayer, granddaughter of Cathy & Paul Schackman

Rabbi Charles A. Kroloff Fund for Jewish Living

Elaine Weill
In honor of Rabbi Kroloff being inducted into the Westfield Hall of Fame
Wendy and Glenn Tucker
In memory of Gloria Fox
Stephen and Bettye Barcan
Barbara and Harvey Krohn
In memory of Eleanor Bouer
Linda Rothenberg
In memory of Eleanor Bouer
In honor of Noah Belafsky's Bar Mitzvah
In honor of Ashlee Rothenberg's Bat Mitzvah
Charlotte Gelfand
In memory of Herb Goldstein
Lauren and Steve Guber, Sam, Jacob, Ben and Levi
Thank you for partaking in Sam's Bar Mitzvah
Susan Shusman
In honor of Rabbi Kroloff being inducted into the Westfield Hall of Fame

GENERAL TEMPLE EMANU-EL FUND

Endowment Fund

Gail & Rick Friedman
In honor of the birth of Diane & Jerry Forman's granddaughter, Scarlett Helena Forman

Security Fund

Cathy & Steven Taback
In memory of mother, mother-in-law & grandmother of the Glenn Family

Temple Fund

Gloria & Richard Brown
In appreciation of minyan
Joanne Bartosik
In memory of Selma Goldenberg, sister of Harriet Schulman
Betsy & Alan Haveson
In appreciation

DISCRETIONARY FUNDS

Rabbi Bennett F. Miller Fund

David and Renee Golush
In memory of Eleanor Bouer
Barbara and Bob Koppel
Welcome to Temple Emanu-El

Rabbi Prosnit's Discretionary Fund

Harriet & Darren Schulman
In appreciation of your support during a difficult time
Jennifer & Matthew Seckler
In honor of the naming of Harper & Nate Seckler
Ellen & Ed Seckler
In honor of Harper Seckler's Pidyon Haben & Nate Seckler's naming, grandchildren of Ellen & Edward Seckler
The Moskowitz Family
In memory of Gloria Fox, mother of Barbara Bregman
In memory of Gloria Fox, mother of Gary Fox
The Gurland Family
In appreciation of Sophia Gurland's Bat Mitzvah
Sharon & Franklin Spirn
In memory of Eli Fishman, father of Ron Fishman
Judy, Jeff Hoffman & Family
In memory of Robert Katz, father of Judy Hoffman
K. Winter Family
In appreciation
The Berger Family
In honor of Olivia Berger's Bat Mitzvah
Lauren, Steve, Sam & Family
In appreciation of Sam Guber's Bar Mitzvah service

Cantor Novick's Discretionary Fund

Maralyn Lieberman
In memory of Gertrude Lieberman
Terri & Rick Klass
Janet & John Levy
Sue Shusman
Lynn & Hal Aronson
In honor of the birth of Cantor Novick's grandson, Liam
Dr. James & Cheryl Frost
In memory of Gloria Fox, mother of Barbara Bregman

Donations to Temple Funds - Thank You To Our Generous Donors!

Donations made through September 29, 2019. Please look for later contributions in the January/February issue. To make a donation, please contact the Temple office at 908-232-6770 x 120.

Cantor Novick's Discretionary Fund Continued

The Goldberg Family
In appreciation of all the support from Cantor Novick
Herb & Joni Mason
In memory of Eleanor Bouer, mother of Susan Sklar
Maralyn Lieberman
In memory of Gertrude Lieberman
Carol Cohen
In honor of the birth of your grandson, Liam
Berger Family
In honor of Olivia Berger's Bat Mitzvah

Cantor Rubel's Discretionary Fund

Maralyn Lieberman
In memory of Sharon Lieberman
Lauren & Steve Guberer
In honor of Samuel Zafra's Bar Mitzvah

SOCIAL ACTION

The Adam Bengal Housing the Homeless Fund

Terri & Rick Klass
In memory of Selma Goldenberg, sister of Harriet Schulman
Linda & Ron Napiorski
In honor of the marriage of Sarah Klass to Emmet Markin, daughter of Terri & Rick Klass

Caring Community

Kathy & Rich Eisenberg & Family
In memory of Selma Goldenberg, sister of Harriet Schulman
Isabel & Steve Berg
In honor of the birth of Ilana Vivienne Blumenreich, daughter of Adam & John Blumenreich
Wendy & Glenn Tucker
Terri & Fred Hodara
In memory of Gloria Fox, mother of Gary Fox
Michelle & Michael Beck
Janet & Bob Kurtter
In honor of the engagement of Kristen Jassin to Jeff Gecker
Cindy & Larry Goldman
In memory of Gloria Fox, mother of Barbara Bregman & Gary Fox
In memory of Stephen Gottdiener, father of Gary Gottdiener
Karen Lange & Richard Weber
In memory of Selma Goldberg, sister of Arlene Nereloff
Michelle & Michael Beck
Isabel & Steven Berg
In memory of Eleanor Bouer, mother of Susan Sklar
Rita & Len Selesner
Wendy & Glen Tucker
In honor of the birth of Diane & Jerry Forman's granddaughter, Scarlett Helena Forman

Lauren Danis Eldernet Fund

Andrea & Howard Wiener
In memory of Stephen Gottdiener, father of Gary Gottdiener

Harris & Sally Gilbert Fund

Alayne & Steve Morgenthal
In honor of the birth of Ilana Vivienne Blumenreich, daughter of Adam & John Blumenreich

The Adam Bengal Housing the Homeless Fund

Linda & Ron Napiorski
In honor of the marriage of Sarah Klass to Emmet Markin

Mandy Reichman Fund

Kathy & Rich Eisenberg & Family
In memory of Robert Katz, father of Judy Hoffman
Paul Schackman
In memory of Sidney Schackman
Joyce & Jack Elbaum
In memory of Mandy
Marci & Michael Schoenbach
In memory of Gloria Fox, mother of Barbara Bregman
In honor of the marriage of Sarah Klass to Emmet Markin
In memory of Eleanor Bouer, mother of Susan Sklar
Meredith & Seth Niessen
In honor of the marriage of Sarah Klass to Emmet Markin
Denise & Nicholas Yatrakis
Veta Stone
In honor of Meryl Reichman's birthday

Nanci Pompan Fund for Women's Empowerment

Maralyn Lieberman & Ed Lerner
In memory of Sharon Lieberman & Gertrude Lieberman
Gail & Joel Yudkovitz
In honor of the engagement of Kristen Jassin to Jeff Gecker

LIBRARY FUND

Fritz and Edith Lehr Library Fund

Karen & Larry Budnick
In honor of the birth of Diane & Jerry Forman's granddaughter, Scarlett Helena Forman

MUSIC

Laura Holland Music Shabbat Fund

Lynn & Hal Aronson
Irene Katz & Jeff Atlas
In memory of Eleanor Bouer, mother of Susan Sklar
Alayne & Steve Morgenthal
In honor of the birth of Cantor Novick's grandson, Liam

YOUTH PROGRAMS

Jyl Skolnick Scholarship Fund

Carol & Gene Rosner
In memory of Larry Stern, husband of Sherri Stern
In memory of Eleanor Bouer, mother of Susan Sklar
In honor of Mr. & Mrs. Stu Bernstein's granddaughter Sydney's Bat Mitzvah
Ocean Otolaryngology Associates & Staff
In memory of Eleanor Bouer, grandmother of Dr. & Mrs. Stephen Kupferberg
Helaine Schlar
In memory of Eleanor Bouer, mother of Susan Sklar

Emily Wolin Memorial Fund

Ellen Brafman
In honor of Jane Wolin's special birthday

We thank the following families for the generous donations to the Religious School:

Stacy & Troy Malko
Shari & Stuart Berman
Robin & Daniel Ives
Meredith & Darby MacEacheron
Nikki & Matt Mendelsohn
Lindsay & Johnathan Bezalel
Joanna & Joshua Schlitzver
Ellen & Dan Ronnen
Shari & Stuart Berman
Hillary & Brian Kaplan
Paula & Stephen Brotman
Jamie & Daniel Librot,
Jennifer & Doug Richte
Adriana & Raymond Eisdorfer

You Can Make a Donation to a Temple Fund ONLINE!

Make a tribute donation quickly and easily online at www.tewnj.org/tributedonation

Temple Emanu-El offers many opportunities to remember a loved one, honor a Bar/Bat Mitzvah, the birth of a child, a wedding, or show your appreciation for someone. A full listing of all Temple Funds can be found online at www.tewnj.org/donate/tributes, or stop by the Temple office.

If you prefer, you may also make a donation by contacting the Temple Office at 908-232-6770.

URJ Biennial 2019 December 11 -15 in Chicago, IL

Registration for URJ Biennial is still open!

Our congregation will join with hundreds of others from across North America at the URJ Biennial 2019 from December 11-15 in Chicago, IL.

And you need to be a part of it!

Biennial has something for everyone, including congregational life workshops for leaders on many topics, Jewish learning, inspiring prayer, and even a session on congregational communications.

You can find lots of information and register right now at **URJBiennial.org**.



URJ BIENNIAL 2019

DECEMBER 11 • 15

CHICAGO, IL

URJ.org/Biennial #URJBiennial

Professional Directory Listing ~

Please support our advertisers since they support us!

Accountant - CPA

Comprehensive Ongoing Services

Gary L. Russikoff, CPA

(973) 564-8080, Springfield

gary@russikoffllc.com

www.russikoffllc.com

Audiologist

Hearing Aid Dispensing

Meredith Rothenberg, Au.D.

The Hearing Center

(732) 574-3550, Clark

drmrothenberg@thcaudiology.com

www.thcaudiology.com

Broker Sales Associate ABR, ASP, CNRS

Coldwell Banker Residential Brokerage

Sherrie Natko

600 North Avenue W., Westfield NJ 07090

cell (908) 303-8133 office (908) 233-0065

Westfield, Union, Essex & Somerset Counties

sherrie.natko@cbmoves.com

www.hometeamsherrie.com

Dentist

Family & Cosmetic Surgery

Westfield Dental Associates, P.A.

Jack C. Elbaum, D.D.S.

Chantal Scott Alpizar, D.M.D.

(908) 232-4400, Westfield

frontdesk@westfielddentalassociates.com

www.westfielddentalassociates.com

Event Planner

Weddings & other Major Lifetime Events

Amanda Hudes

(845) 264-5575, Scotch Plains

Amanda@SmilingThroughChaos.com

www.SmilingThroughChaos.com

Geriatric Care Management

Aging Life Care Professional @

Elyse Weber-Sacks, LSW, CMC

(973) 984-3707

Westfield, Morris Plains, Northern NJ

ewebersacks@crcaremgmnt.com

www.ConnieRosenbergCareManagement.com

Orthodontist

Certified, American Board of Orthodontics

Dr. Thomas M. Burns, D.M.D., P.A.

(908) 789-8858, Westfield

westfieldbraces@gmail.com

www.westfieldbraces.com

Veterinarian

Small Animals and Exotics

Dr. Robert Markowitz

(908) 276-1661, Kenilworth

Boulevardvet429@gmail.com

www.boulevardveterinaryclinic.com

Westfield Pediatric Dental Group
LASER DENTISTRY In Office IV and General Anesthesia
Dentistry for Infants, Children, Adolescents and Special Needs
Visit our web site
TIMOTHY P. McCABE, D.M.D., Board Certified
JULIE JONG, D.M.D., Board Certified
JOHN CHANG, D.D.S., Board Certified
KELLY WALK, D.D.S., Board Certified
SARA KARLIN, D.D.S., Board Eligible
908-232-1231
kidsandsmile.com • 555 Westfield Avenue • Westfield, NJ 07090

A TRAIN PRODUCTIONS
Creative Event Videography
• Bar/Bat Mitzvah
• Wedding
• Photo/Video Montage
• Musical Performance
• Sports
• Large Screen Projection
• Live Event Streaming
Artistry • Creativity • Integrity
The exclusive videographer of Temple Emanu-El B'nai Mitzvah services
908-233-1784
www.etrainproductions.com

Yesterday.



Herbert Ross
Founder

Today.



Karen Ross Kerstein
Manager

Tomorrow.



Our future is coming

At Menorah Chapels, we've been serving the Jewish community for over forty years... and we will continue to serve with honesty, integrity and dignity for many years to come. We are the only strictly Jewish funeral home in Union County that maintains its own building and are not affiliated with any other funeral home.

We were here for you yesterday... we are here for you today, and we will be here for you tomorrow.



Menorah Chapels at Millburn

2950 Vauxhall Road, Union, NJ 07088 908-964-1500

Karen Ross Kerstein, Manager, NJ Lic. No. JP03663

Rudolph H. Kindel, President, NJ Lic. No. JP03158

Established 1975
Independently Owned
Handicap Accessible

Worldwide Arrangements New York · Florida · California · Israel
Out of State: 1-800-437-5151

www.menorahchapelsatmillburn.com



...We Truly

Care

Not affiliated
with any other
funeral home

Westfield Hearing Aid Center

940 South Ave West
Westfield, NJ 07090

Erich H. Golden, NJ Lic#727

(908) 233-0939

www.westfieldhearingaidcenter.com

Hearing instruments help many people hear better, but cannot solve every hearing problem or restore normal hearing. Copyright © 2016 Signia GmbH. All rights reserved. Signia, Inc. is a Trademark Licensee of Siemens AG. 9/16 D-7443



Accredited by the National Institute for Jewish Hospice and CHAP (Community Health Accreditation Partner)

354 DeMott Lane
Somerset, NJ 08873

STEIN HOSPICE

732-227-1212

at The Oscar and Ella Wilf Campus for Senior Living

www.WilfCampus.org



OF CENTRAL NEW JERSEY
WILF JEWISH COMMUNITY CAMPUS

There's something
about this place!

www.jccnj.org



DMD, PA

NJ Specialty Permit #3299

Pediatric & Adult Orthodontics



525 Westfield Avenue • Westfield, NJ 07090 • (908) 789-8858
www.westfieldbraces.com

PUT YOUR FAITH IN US



DESIGN & CONSTRUCTION LLC
REDCOMLLC.COM | (908) 233-4030



OFFICE HOURS
BY APPOINTMENT

David M. Fuerst, D.V.M.
Robert J. Markowitz, V.M.D.
Lauren Abdelmessih, D.V.M.

908-276-1661
Fax 908-276-7131
429 Boulevard

Kenilworth, NJ 07033

Interested in seeing
your ad here?

Contact Jackie Master about
Advertising in the Temple
Emanu-El bi-monthly Bulletin.

908-232-6770 x 133 or
jmaster@tewnj.org

Looking for New Insurance?

As the insurer of
Temple Emanu-El we
welcome you to
contact our office for
all of your insurance
needs

Services we offer-

- Homeowners Insurance
- Condominium Insurance
- Renters Insurance
- Automobile Insurance
- Flood Insurance
- Umbrella Insurance
- Life/Health Insurance
- Business Insurance

Felsen Insurance Services, Inc.
3155 Route 10 Suite 103
Denville, NJ 07834



Visit us on the web at
www.felsen.com

Tel: 1-800-2-TEMPLE



ORTHOPEDIC MEDICINE CENTER

REHABILITATION AND RECOVERY ARE AT THE CORE OF EVERYTHING WE DO.

Allan D. Tiedrich, M.D., P.A.

F.A.A.P.M. & R.

Board Certified Physical Medicine and Rehabilitation
NJ State Certified Medical Marijuana Physician

Conditions Treated

TRAUMA AND INJURY | SPORTS INJURY | CONDITIONS OF AGING

Special Services

**DISABILITY AND LEGAL ISSUES | MEDICAL MARIJUANA PHYSICIAN
DRUG ADDICTION TREATMENT**

Tel 908.769.7999 | Fax 908.769.5816

info@doctortomc.com | www.doctortomc.com
info@doctor-thc.com | www.doctor-thc.com

1304 South Avenue, Suite 4
Plainfield, NJ 07062

11 Monroe Street
Bridgewater, NJ 08807



 Temple **עמנואל**

 Emanu-El of Westfield

 756 East Broad Street

 Westfield, NJ 07090

Non-Profit Org.
 U.S. Postage
 PAID
 Rahway, N.J.
 Permit No. 620



STANLEY SCHWARTZ

 Music

 www.sschwartzmusic@aol.com Stanley Schwartz Music 908 416-4655

custom invitations • all at a discount!


 mitzvah • wedding

 envelope addressing

 personalized service

 25 years experience

 908.232.5051 • karensanders@yahoo.com


 Sales Associate

Choosing the Right Realtor Makes a Difference

 ▲ Partners for success with home buyers & sellers

 ▲ Demonstrates powerful negotiation skills

 ▲ Provides expert service before, during & after the closing

Call Irene Today...It's the Best Move You'll Make!

 c: 908-419-6982 ▲ e: irenekatz@aol.com

 ▲ **www.irenekatz.com** ▲


 209 Central Avenue, Westfield, NJ 07090 ▲ o: 908-233-5555 x228



COLDWELL BANKER

 RESIDENTIAL BROKERAGE

 Owned & Operated by NRT, LLC


Shari Holtzman

 MBA, Realtor Associate

 NJAR Circle of Excellence

 2009-2018

Coldwell Banker Residential Brokerage

 209 Central Avenue, Westfield, NJ 07090

 Office: 908-233-5555 Call/Text: 908-868-6299

 shari.holtzman@cbmoves.com

 visit: **www.makeNJhome.com**


Sherrie Natko

 Broker Sales Associate, ABR, ASP, SRES

GLOBAL LUXURY SPECIALIST

 NJ REALTORS Circle of Excellence 2007-2017

 FIVE STAR REAL ESTATE PROFESSIONAL - NJ Monthly Magazine

 Coldwell Banker Residential Brokerage - Westfield "West" Office

 600 North Avenue West, Westfield, NJ 07090

 Office: 908-233-0065

 Cell: 908-303-8133

 sherrie.natko@cbmoves.com

 www.HomeTeamSherrie.com

COLDWELL BANKER

 RESIDENTIAL BROKERAGE




Gersch Orthodontics

 Advanced Cosmetic **SMILES** for Children & Adults

NJ Top Orthodontists and NJ Top Kids Docs

 547 East Broad St. 401 North Wood Ave. 118 North Ave West

 Westfield, NJ 07090* Linden, NJ 07036 Cranford, NJ 07016

 Please call for your Complimentary Evaluation, Xray & Consultation (a \$350 value)

 Most insurances accepted • Interest free financing

(908) 233-8668

www.GerschOrtho.com

 * Across from the Westfield Library *